



INSTALLATION SYSTEMS




MM Channel System

MM Channel System

Page 230 - 237


MQ Channel System

MQ Channel System

Page 237 - 248


MC Channel System

MC Channel System

Page 249


Accessories

Beam Clamp MAB	Page 249
Perforated Band	Page 249
Threaded rod 4.8 AM	Page 250
Flat washer ISO 7089	Page 250
Hexagon nut grade 8 DIN 934	Page 250
Hexagon bolt	Page 251
Spacer coupling	Page 251
Eye nut	Page 251
Hanger bolt	Page 252
Hex head wood screw	Page 252
Threaded rod cutter NK-M/MRC	Page 252
Flat Washer	Page 252
Air duct bracket MVA-LC	Page 253
Air duct bracket MVA-ZC	Page 253


Pipe Rings

Residential pipe ring MP-HI	Page 254
Pipe ring MP-PI	Page 254-255
Residential pipe ring assy MP-H	Page 255
Heavy-duty pipe ring MP-MI M10/M12	Page 256
Heavy-duty pipe ring, metric MP-MXI	Page 256
Heavy-duty pipe ring, metric MP-MX	Page 256
Sprinkler pipe hanger LH	Page 257
Sprinkler pipe hanger M10, M12, M16 MP-SP	Page 257
Heavy-duty pipe ring, MP-MI-F	Page 258
Heavy-duty pipe ring, MP-MXI-F	Page 258


Hot Dipped Galvanised Parts





Hot Dipped Galvanised Parts

Page 259

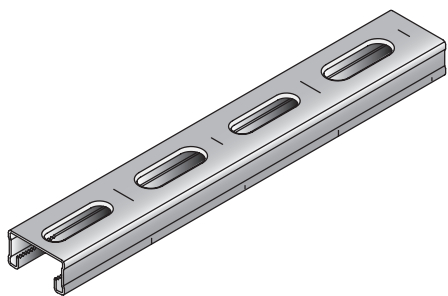

Heavy-duty Supports

Heavy-duty supports- MI

Page 260 - 267

Products	Characteristics	Applications
<p>System MM Light and Medium-duty Channel Installation</p> 	<ul style="list-style-type: none"> • Innovative system • Easy and quick installation • Minimum parts for a diversity of applications 	<ul style="list-style-type: none"> • Suitable for most light and medium mechanical and electrical support applications • Ventilation duct supports • Electrical cable trays supports
<p>System MQ Medium-Duty Channel Installation</p> 	<ul style="list-style-type: none"> • Modular 3D system with unlimited number of connections • Can be quickly modified or adapted to accommodate changing site situations • Labour saving design with one-man installation • Greatly reduce the need for welding and drilling • Preassembled angle pieces allow rapid assembly, easy positioning and fast removal • Modular design reduces the need for detailed planning work • High strength and stability • High corrosion protection-system also available in hot dipped galvanised and stainless steel • Design software support 	<ul style="list-style-type: none"> • Suitable for most mechanical and electrical support applications • Horizontal and vertical heating pipe supports with expansion movement capability • Vertical and horizontal fresh and waste water pipes fixing • Ventilation duct supports • Chilled water pipe supports • Electrical cable trays and long bar supports • Supporting industrial equipment and machinery • Suspending ceiling supports
<p>System MC Medium-Duty Channel Installation</p> 	<ul style="list-style-type: none"> • Lightweight • Simple-to-install • Flexible solution • Minimum parts for a diversity of applications • Quick and easy installation • Easy to plan 	<ul style="list-style-type: none"> • Integrated floor supports • Cable tray supports • Instrumentation stands & supports • Suitable for most mechanical and electrical support applications
<p>System MI Industrial System Installation</p> 	<ul style="list-style-type: none"> • System certified by the TUV (German standards authority) in accordance with DIN EN 13480 • Complete compatibility with MQ system • High corrosion resistance • Dynamic load tested • System parts can weigh up to 50% less than conventional structures • Non-welding - high flexibility • PROFIS 3D support design software available 	<ul style="list-style-type: none"> • Suitable for industrial pipes and cable tray support applications • 3D applications • Petrochemical applications • Raised floor applications

Installation channel MM-C-16



KEY APPLICATIONS & ADVANTAGES

- Fastening ventilation ducts and cable trays
- Fastening light to medium-duty pipe runs
- Recommended for use in dry interiors
- C-profile with serrated edges
- Reinforced slots for greater versatility

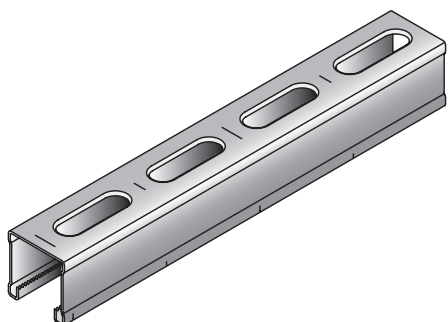
Technical data

Material composition	S250GD - DIN EN 10346
Surface finish	Sendzimir galvanized



Ordering designation	Height	Length	Material thickness	Weight per metre length	Approvals	Package contents	Sales pack quantity	Item number
MM-C-16 2m	16 mm	2 m	1 mm	558 g	RAL-GZ 655-C	1x Install. channel MM-C-16 2m packed	16 m	418748

Installation channel MM-C-30



KEY APPLICATIONS & ADVANTAGES

- Fastening ventilation ducts and cable trays
- Fastening light to medium-duty pipe runs
- Recommended for use in dry interiors
- C-profile with serrated edges
- Reinforced slots for greater versatility

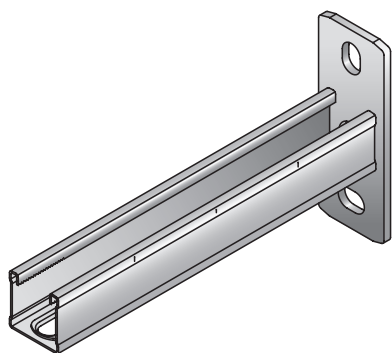
Technical data

Material composition	S250GD - DIN EN 10346
Surface finish	Sendzimir galvanized



Ordering designation	Height	Length	Material thickness	Weight per metre length	Approvals	Package contents	Sales pack quantity	Item number
MM-C-30 2m	30 mm	2 m	1 mm	750 g	RAL-GZ 655-C	1x Install. channel MM-C-30 2m packed	16 m	418749

Bracket MM-B-30



KEY APPLICATIONS & ADVANTAGES

- For fastening light to medium-duty pipe runs
- For fastening ventilation ducts and cable trays
- Recommended for use in dry interiors
- Serrated C-section
- Reinforced slots for greater versatility and rigidity

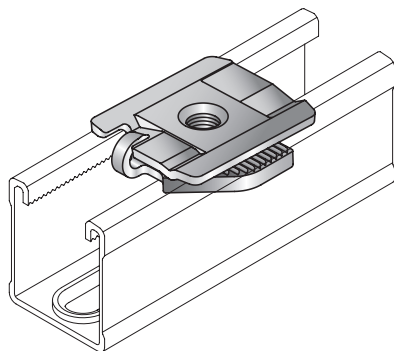
Technical data

Material composition	Material channel: S235 JR - DIN EN 10025-2, Material plate: S355 MC - DIN EN 10149-2
Surface finish	Galvanized



Ordering designation	Profile	Length - L	Material thickness	Weight	Package contents	Sales pack quantity	Item number
MM-B-30/200	MM-C-30	200 mm	Channel: 1 mm, Baseplate: 4 mm	287 g	0.1x Install. channel MM-C-30 L=6000mm	10 pc	418752

Pipe ring saddle MM-S



KEY APPLICATIONS & ADVANTAGES

- Installing threaded rods for pipe and air duct suspension systems
- Installation of threaded studs for fastening pipes
- Suitable for all three MM channel profiles
- Can be fitted and removed without need for tools

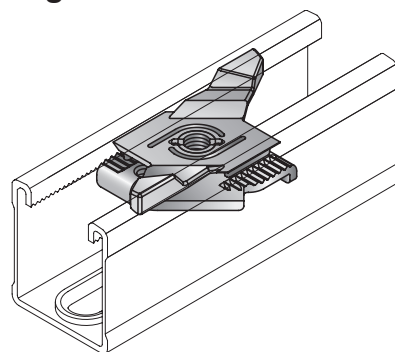
Technical data

Material composition	S355 MC - DIN EN 10149-2
Surface finish	Galvanized
Approvals	RAL-GZ 655-D



Ordering designation	Thread - M	Tightening torque	Weight	Package contents	Sales pack quantity	Item number
MM-S M8	M8	12 Nm	25 g	1x Pipe ring saddle MM-S M8	25 pc	418760
MM-S M10	M10	16 Nm	25 g	1x Pipe ring saddle MM-S M10	25 pc	418761

Wing nut MM-WN



KEY APPLICATIONS & ADVANTAGES

- Fitting connectors to installation channels
- Connector for MM system installation channels
- Easy to handle
- Wing nut is flush mounted

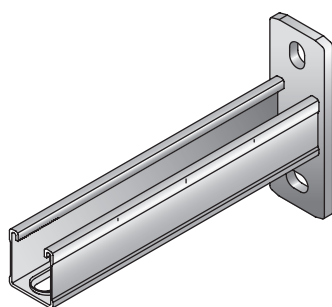
Technical data

Material composition	Nut: DC04 - DIN EN 10130, Wing: PA
Surface finish	Galvanized



Ordering designation	Thread - M	Tightening torque	Weight	Package contents	Sales pack quantity	Item number
MM-WN M8	M8	5 Nm	12 g	1x Wing nut MM-WN M8	50 pc	418765
MM-WN M10	M10	5 Nm	12 g	1x Wing nut MM-WN M10	50 pc	418766

Bracket MM-B-36



KEY APPLICATIONS & ADVANTAGES

- For fastening light to medium-duty pipe runs
- For fastening ventilation ducts and cable trays
- Recommended for use in dry interiors
- Serrated C-section edge
- Elongated holes with flanged edges for greater versatility and strength

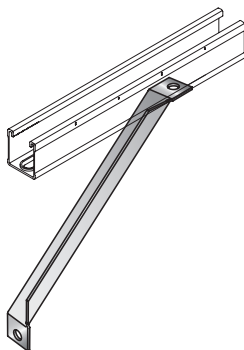
Technical data

Material composition	Material channel: S235 JR - DIN EN 10025-2, Material plate: S355 MC - DIN EN 10149-2
Surface finish	Galvanized



Ordering designation	Profile	Length - L	Material thickness	Weight	Sales pack quantity	Item number
MM-B-36/300	MM-C-36	300 mm	Channel: 1.75 mm, Baseplate: 6 mm	628 g	10 pc	418754
MM-B-36/450	MM-C-36	450 mm	Channel: 1.75 mm, Baseplate: 6 mm	842 g	10 pc	418755
MM-B-36/600	MM-C-36	600 mm	Channel: 1.75 mm, Baseplate: 6 mm	1046 g	10 pc	418756

Angle brace MM-AB



KEY APPLICATIONS & ADVANTAGES

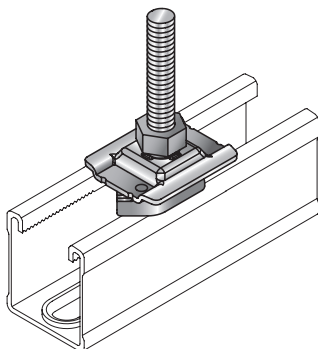
- Constructing wall brackets with various cantilever lengths
- Support for all MM system brackets fastened on walls
- Allows easy customization of stand-alone structures

Technical data

Material composition	S235JR - DIN EN 10025
Surface finish	Galvanized

Ordering designation	Height - H	Length - L	Material thickness	Weight	Package contents	Sales pack quantity	Item number
MM-AB	202 mm	202 mm	2.5 mm	230 g	1x Angle brace MM-AB	10 pc	418772

T-head bolt MM-ST



KEY APPLICATIONS & ADVANTAGES

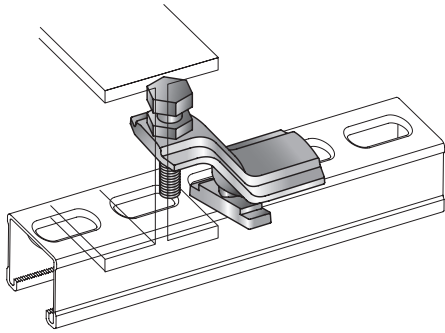
- Fastening light and medium-duty piping
- Extremely fast installation thanks to the unique fastening mechanism
- Easy height adjustment within the installation channel

Technical data

Material composition	Plate: DD11 - DIN EN 10111, Nut: DC04 - DIN EN 10130
Surface finish	Galvanized
Approvals	RAL-GZ 655-D

Ordering designation	Thread - M	Length - L	Wrench size	Height - H	Tightening torque	Weight	Package contents	Sales pack quantity	Item number
MM-ST M8x40	M8	30 mm	13 mm	40 mm	12 Nm	43 g	1x T-head bolt MM-ST M8x40	50 pc	418777
MM-ST M8x80	M8	70 mm	13 mm	80 mm	12 Nm	57 g	1x T-head bolt MM-ST M8x80	50 pc	418779
MM-ST M8x100	M8	90 mm	13 mm	100 mm	12 Nm	62 g	1x T-head bolt MM-ST M8x100	50 pc	418780
MM-ST M8x200	M8	190 mm	13 mm	200 mm	12 Nm	93 g	1x T-head bolt MM-ST M8x200	20 pc	2030482
MM-ST M10x40	M10	30 mm	17 mm	40 mm	16 Nm	55 g	1x T-head bolt MM-ST M10x40	50 pc	418782
MM-ST M10x80	M10	70 mm	17 mm	80 mm	16 Nm	60 g	1x T-head bolt MM-ST M10x80	50 pc	418792
MM-ST M10x100	M10	90 mm	17 mm	100 mm	16 Nm	77 g	1x T-head bolt MM-ST M10x100	50 pc	418793

Beam clamp MM-T-16-36



KEY APPLICATIONS & ADVANTAGES

- Fastening MM channel profiles to steel beams
- The beam clamp set fits all common T-beams (max. clamping thickness 23mm)
- Extremely quick installation of MM channel system on steel beams without drilling or welding
- Easy alignment in the right position

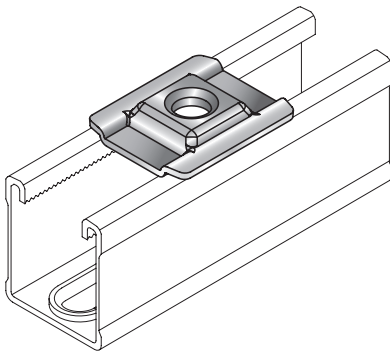
Technical data

Material composition	EN-GJMB-550-4 - DIN EN 1562
Surface finish	Galvanized



Ordering designation	Thread - M	Wrench size	Weight	Package contents	Sales pack quantity	Item number
MM-T-16-36	M8	13 mm	112 g	1x Beam clamp MM-T-16-36 assy	20 pc	418763

Channel washer MM-CW



KEY APPLICATIONS & ADVANTAGES

- Used to support suspended MM channel systems
- Used together with MM channels, wing nuts and brackets
- Perfectly matched to the MM installation channel system
- No lateral slippage possible thanks to an exact fit

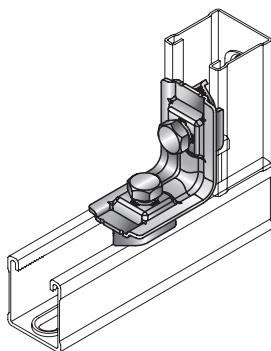
Technical data

Material composition	DD11 - DIN EN 10111
Surface finish	Galvanized



Ordering designation	Hole diameter - D	Weight	Package contents	Sales pack quantity	Item number
MM-CW M8	8.6 mm	16 g	1x Channel washer MM-CW M8	20 pc	418769
MM-CW M10	10.6 mm	16 g	1x Channel washer MM-CW M10	20 pc	418770

Angle MM-A-90



KEY APPLICATIONS & ADVANTAGES

- Assembly of frames and supporting structures
- Joining channels at right angles
- Recommended for U-frame structures
- Pre-assembled for rapid installation
- Can be fitted to channels in various positions

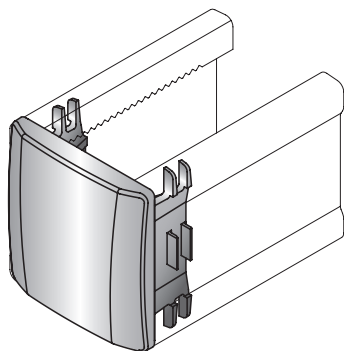
Technical data

Material composition	DC04 - DIN EN 10130
Surface finish	Galvanized
Approvals	RAL-GZ 655-D



Ordering designation	Thread - M	Wrench size	Tightening torque	Weight	Sales pack quantity	Item number
MM-A-90	M8	13 mm	12 Nm	84 g	20 pc	418757

Channel end cap MM-E



KEY APPLICATIONS & ADVANTAGES

- Edge protector for MM installation channel system
- Suitable for all MM installation channels

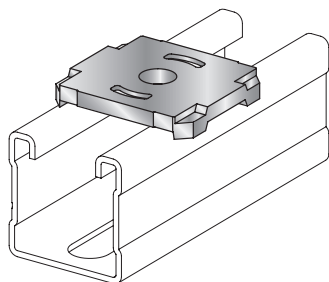
Technical data

Material composition	Polypropylene (PP)
Additional product information	These products are complementary to Hilti channels and sale is possible only together with channels in the ratio of two end caps to one channel. For detailed lead time information please contact your Hilti representative.



Ordering designation	Weight	Package contents	Sales pack quantity	Item number
MM-E-16	2 g	1x Channel end cap MM-E-16	50 pc	418773
MM-E-30	4 g	1x Channel end cap MM-E-30	50 pc	418774
MM-E-36	5 g	1x Channel end cap MM-E-36	50 pc	418775

Drilled plate MQZ-L



KEY APPLICATIONS & ADVANTAGES

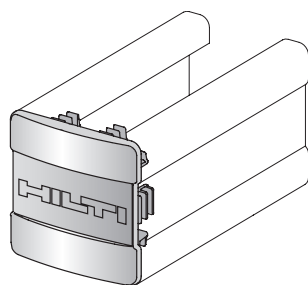
- For wall, ceiling or floor attachment of angles, connectors or brackets
- For fastening metric threaded parts to MQ channel
- Matching items in program
- Matches the MQ channel system perfectly

Technical data

Material composition	S235JR - DIN EN 10025
Surface finish	Electro-galvanized - for dry indoor use only

Ordering designation	Hole diameter - D	Weight	Package contents	Sales pack quantity	Item number
MQZ-L9	9.5 mm	84 g	1x Plate MQZ-L9	20 pc	369678
MQZ-L11	11.5 mm	82 g	1x Plate MQZ-L11 / MQZ-L3/8"	20 pc	369679

Channel end cap MQZ-E



KEY APPLICATIONS & ADVANTAGES

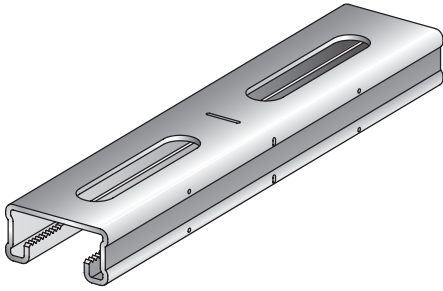
- Provides protection when handling sharp cut edges
- Neat appearance
- Additional protection when handling installation channels with sharp, cut edges

Technical data

Material composition	Polypropylene (PP)
Additional product information	These products are complementary to Hilti channels and sale is possible only together with channels in the ratio of two end caps to one channel. For detailed lead time information please contact your Hilti representative.

Ordering designation	Weight	Package contents	Sales pack quantity	Item number
MQZ-E21	3 g	1x Cap MQZ-E21	50 pc	370598
MQZ-E31	4 g	1x Cap MQZ-E31	50 pc	369686
MQZ-E41	5 g	1x Cap MQZ-E41	50 pc	369685

Installation channel MQ-21



KEY APPLICATIONS & ADVANTAGES

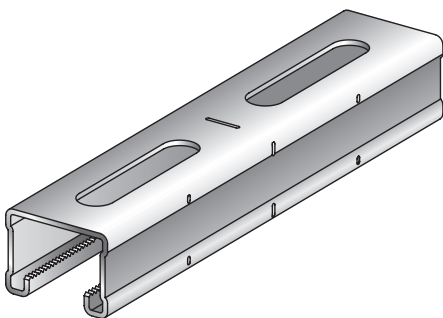
- Recommended for installation in dry interiors
- Pipework
- Air ducts
- C-profile with serrated edges
- Aesthetic appearance

Technical data

Material composition	S250GD - DIN EN 10346
Surface finish	Sendzimir galvanized

Ordering designation	Height	Length	Material thickness	Weight per metre length	Approvals	Package contents	Sales pack quantity	Item number
MQ-21 3m	21 mm	3 m	2 mm	1438 g	RAL-GZ 655-C	0.333333x Install. channel MQ-21 3M packed	3 m	369584

Installation channel MQ-31



KEY APPLICATIONS & ADVANTAGES

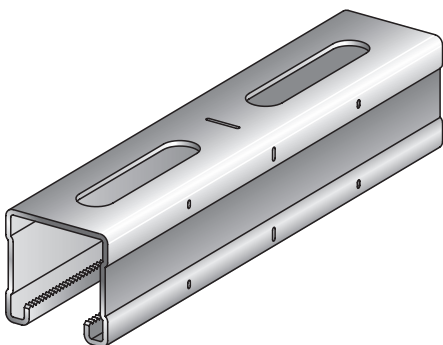
- Recommended for installation in dry interiors
- Pipework
- Air ducts
- C-profile with serrated edges
- Aesthetic appearance

Technical data

Material composition	S250GD - DIN EN 10346
Surface finish	Sendzimir galvanized

Ordering designation	Height	Length	Material thickness	Weight per metre length	Approvals	Package contents	Sales pack quantity	Item number
MQ-31 3m	31 mm	3 m	2 mm	1759 g	RAL-GZ 655-C	0.333333x Install. channel MQ-31 3M packed	3 m	369589

Installation channel MQ-41



KEY APPLICATIONS & ADVANTAGES

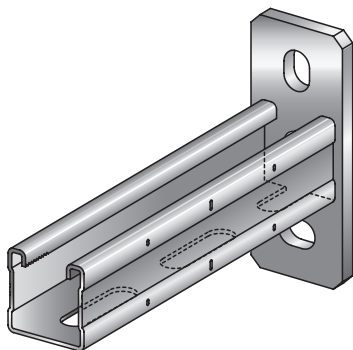
- Recommended for installation in dry interiors
- Pipework
- Air ducts
- C-profile with serrated edges
- Aesthetic appearance

Technical data

Material composition	S250GD - DIN EN 10346
Surface finish	Sendzimir galvanized

Ordering designation	Height	Length	Material thickness	Weight per metre length	Approvals	Package contents	Sales pack quantity	Item number
MQ-41 3m	41 mm	3 m	2 mm	2080 g	RAL-GZ 655-C	1x Install. channel MQ-41 3M packed	3 m	369591
MQ-41 6m	41 mm	6 m	2 mm	2080 g	RAL-GZ 655-C	0.166667x Install. channel MQ-41 6M packed	6 m	369592

Bracket MQK-41



KEY APPLICATIONS & ADVANTAGES

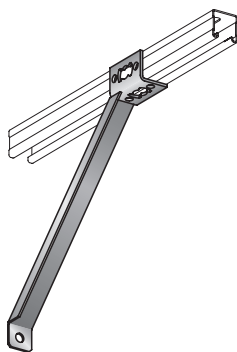
- Stand-alone use on ceilings, walls and floors or combined with channel systems
- Recommended for installation in dry interiors
- For the installation of cable trays, air ducts and pipe supports
- Serrated C-section
- Easy assembly and higher shear loads

Technical data

Material composition	S235JR - DIN EN 10025
Surface finish	Electro-galvanized - for dry indoor use only

Ordering designation	Profile	Length - L	Material thickness	Weight	Sales pack quantity	Item number
MQK-41/300	MQ-41	300 mm	Channel: 2 mm, Baseplate: 8 mm	976 g	10 pc	369609
MQK-41/450	MQ-41	450 mm	Channel: 2 mm, Baseplate: 8 mm	1292 g	10 pc	369610
MQK-41/600	MQ-41	600 mm	Channel: 2 mm, Baseplate: 8 mm	1645 g	10 pc	369611

Angle brace MQK-S



KEY APPLICATIONS & ADVANTAGES

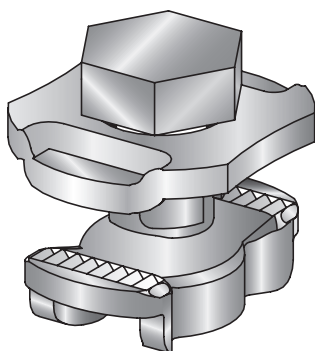
- Recommended for fabricating wall brackets with individual stand-off lengths
- Increases the loadbearing capacity of brackets
- Easily customized stand-alone structures
- Channel assembly in two positions is possible

Technical data

Material composition	S235JR - DIN EN 10025
Surface finish	Electro-galvanized - for dry indoor use only

Ordering designation	Height - H	Length - L	A	Material thickness	Weight	Package contents	Sales pack quantity	Item number
MQK-SK short	328 mm	324 mm	355 mm	3 mm	620 g	1x Angle brace MQK-SK assy	10 pc	369622
MQK-SL long	528 mm	524 mm	635 mm	3 mm	980 g	1x Angle brace MQK-SL assy	10 pc	369621

Channel connector MQN



KEY APPLICATIONS & ADVANTAGES

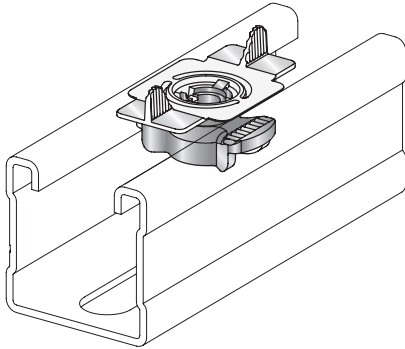
- Recommended for connecting angles to channels
- Connecting channels and structural elements
- Universal: one and the same nut for all MQ channels
- Fewer parts and high flexibility

Technical data

Material composition	Bolt: grade 8.8 - DIN EN ISO 898, Nut: QSTE 380 TM, SEW 92, Plate: DD11 - DIN EN 10111
Surface finish	Electro-galvanized - for dry indoor use only

Ordering designation	Thread - M	Wrench size	Tightening torque	Weight	Package contents	Sales pack quantity	Item number
MQN	M10	17 mm	40 Nm	67 g	1x Channel connector MQN-M10 assy	50 pc	369623

Wing nut MQM



KEY APPLICATIONS & ADVANTAGES

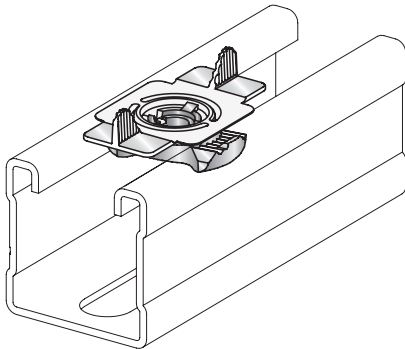
- Simple part for connecting channels to parts of structures
- Easy disassembly
- In-plane connection to channel possible

Technical data

Material composition	Wings: plastic PA, Nut: S355MC - DIN EN 10149-2
Surface finish	Electro-galvanized - for dry indoor use only

Ordering designation	Thread - M	Tightening torque	Weight	Package contents	Sales pack quantity	Item number
MQM-M8	M8	20 Nm	24 g	1x Wing nut MQM-M8 assy	50 pc	369698
MQM-M10	M10	30 Nm	25 g	1x Wing nut MQM-M10 assy	50 pc	369626

Solid wing nut MQM



KEY APPLICATIONS & ADVANTAGES

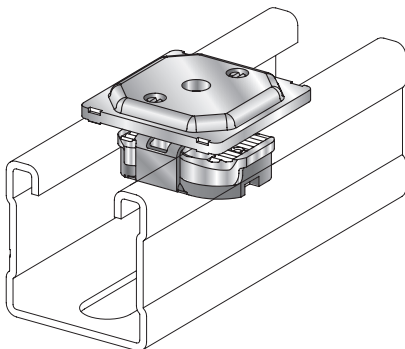
- Element for direct connection to channels

Technical data

Material composition	Wings: plastic PA, Nut: C4C - DIN EN 10263
Surface finish	Electro-galvanized - for dry indoor use only

Ordering designation	Thread - M	Tightening torque	Weight	Package contents	Sales pack quantity	Item number
MQM-M12	M12	40 Nm	32 g	1x Wing nut MQM-M12 assy	50 pc	369627

Pipe ring saddle MQA



KEY APPLICATIONS & ADVANTAGES

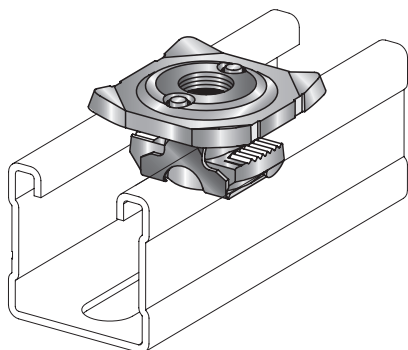
- Various suspensions with threaded rods
- Pipe ring saddle for pipe installation
- One-piece design
- Only one type of saddle nut for all MQ channels

Technical data

Material composition	Nut: QSTE 380 TM, SEW 92, Plate: DD11 - DIN EN 10111, Plastic: PA 6.6
Surface finish	Electro-galvanized - for dry indoor use only

Ordering designation	Thread - M	Tightening torque	Weight	Package contents	Sales pack quantity	Item number
MQA-M8	M8	9 Nm	57 g	1x Pipe ring saddle MQA-M8 assy	50 pc	369629
MQA-M10	M10	18 Nm	58 g	1x Pipe ring saddle MQA-M10 assy	50 pc	369630

Pipe ring saddle MQA-B



KEY APPLICATIONS & ADVANTAGES

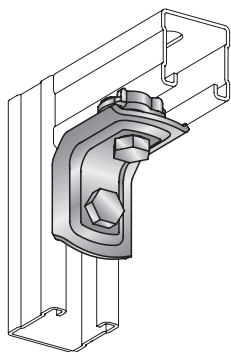
- Various suspensions with threaded rods
- Pipe ring saddle for pipe installations with fire safety requirements
- Single-part design
- One and the same saddle nut for all MQ channels

Technical data

Material composition	Nut: GTW45, DIN 1692, Plate: S 235 JRG2 - DIN EN 10025, Plastic: PBT
Surface finish	Electro- galva- nized - for dry indoor use only

Ordering designation	Thread - M	Tightening torque	Weight	Package contents	Sales pack quantity	Item number
MQA-M12-B	M12	31 Nm	85 g	1x Pipe ring saddle MQA-M12-B assy	50 pc	369631

Preassembled angle MQW-Q2



KEY APPLICATIONS & ADVANTAGES

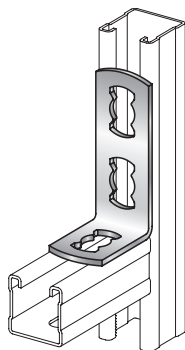
- Assembly of frames and structures
- Connection of channels
- Preassembled for rapid installation
- High strength

Technical data

Material composition	Angle: DD11 - DIN EN 10111, Bolt: M10 grade 8.8 - DIN ISO 898
Surface finish	Electro- galva- nized - for dry indoor use only
Material thickness	3 mm

Ordering designation	Angle	Wrench size	Tightening torque	Weight	Sales pack quantity	Item number
MQW-Q2	90 °	17 mm	40 Nm	199 g	20 pc	369655

Angle MQW 90°



KEY APPLICATIONS & ADVANTAGES

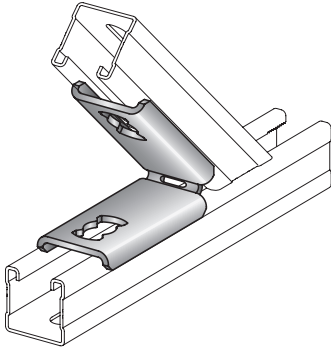
- Assembly of frames and other structures
- Quick installation
- Easy to handle

Technical data

Material composition	S235JR - DIN EN 10025
Surface finish	Electro- galva- nized - for dry indoor use only
Material thickness	4 mm

Ordering designation	Angle	Weight	Sales pack quantity	Item number
MQW-4	90 °	250 g	10 pc	369658

Angle bracket MQW 45°/135°



KEY APPLICATIONS & ADVANTAGES

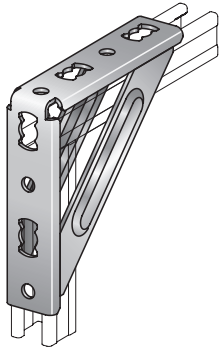
- Assembling frames and other structures
- Connection of channels
- Quick installation
- Reliable, positive locking hold

Technical data

Material composition	DD11 MOD - HN 547, S235JR - DIN EN 10025
Surface finish	Electro- galva- nized - for dry indoor use only
Material thickness	4 mm

Ordering designation	Angle	Weight	Sales pack quantity	Item number
MQW-8/45	45 °	400 g	10 pc	369660

Angle bracket MQW-S



KEY APPLICATIONS & ADVANTAGES

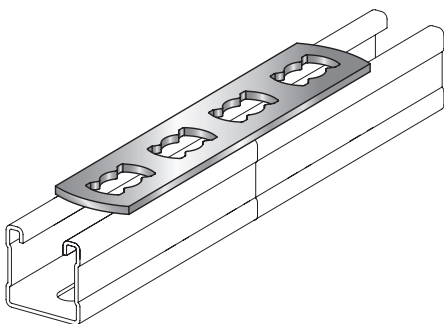
- Building frames and other assemblies
- Making connections to walls, floors and ceilings
- Connection of Hilti channels
- Quick installation
- Universal: few parts for all applications

Technical data

Material composition	S235JR - DIN EN 10025
Surface finish	Electro- galva- nized - for dry indoor use only
Material thickness	4 mm

Ordering designation	Angle	Weight	Sales pack quantity	Item number
MQW-S/1	90 °	430 g	10 pc	369664
MQW-S/2	90 °	1190 g	10 pc	369665

Channel tie - flat MQV



KEY APPLICATIONS & ADVANTAGES

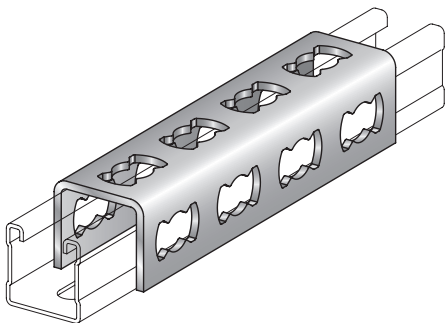
- Suitable for complex channel structures
- For clever single-plane channel design
- Universal: few parts for various applications
- Easy to use

Technical data

Material composition	S235JR - DIN EN 10025
Surface finish	Electro- galva- nized - for dry indoor use only
Material thickness	4 mm

Ordering designation	Weight	Sales pack quantity	Item number
MQV-P4	182 g	10 pc	369644
MQV-T	187 g	10 pc	369645

Longitudinal connector MQV



KEY APPLICATIONS & ADVANTAGES

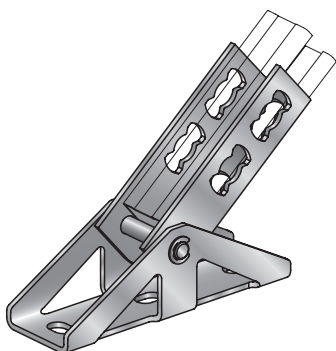
- Connecting two channels together
- Allows simple extension of channel length
- Joints between MQ-41 D and MQ-52/72 channels using 2 connectors have the full section modulus

Technical data

Material composition	S235JRG2 - DIN EN 10025
Surface finish	Electrogalvanized - for dry indoor use only
Material thickness	4 mm

Ordering designation	Weight	Sales pack quantity	Item number
MQV-12	598 g	10 pc	369643

Pivot base MQP



KEY APPLICATIONS & ADVANTAGES

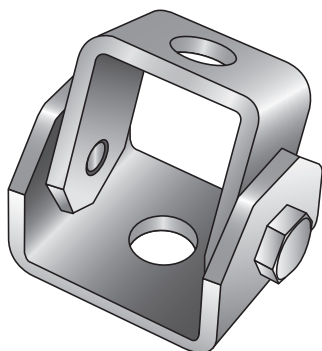
- Connection of channels to any supporting material
- High application flexibility
- Reliable and easy to use

Technical data

Material composition	S235JR - DIN EN 10025
Surface finish	Electrogalvanized - for dry indoor use only
Material thickness	4 mm

Ordering designation	Weight	Package contents	Sales pack quantity	Item number
MQP-G	1204 g	1x Rail support MQP-G assy	10 pc	369654

Universal joint MQP-U



KEY APPLICATIONS & ADVANTAGES

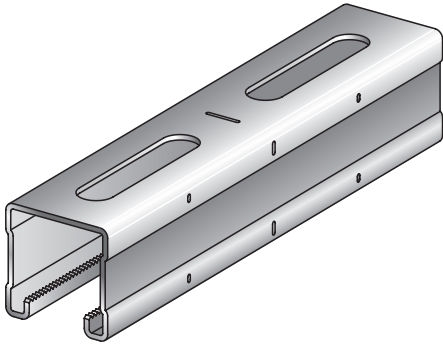
- Universal use on inclined building components
- Flexible solution, wide range of applications
- Angle infinitely adjustable up to 90°

Technical data

Material composition	S235JR - DIN EN 10025
Surface finish	Electrogalvanized - for dry indoor use only
Material thickness	5 mm
Additional product information	For use with threaded rod of at least 4.8 grade (DIN 976), 8.8 grade bolts (DIN 933), 8 grade nuts (DIN 934) and 13/24 washers for M12 or 17/30 for M16 (DIN 125) - not included

Ordering designation	Hole diameter - D	Weight	Sales pack quantity	Item number
MQP-U M12	12.5 mm	438 g	10 pc	284248

Hot-dip galvanized installation channel MQ-41-F



KEY APPLICATIONS & ADVANTAGES

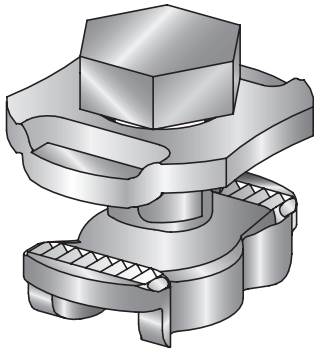
- Pipework
- Air ducts
- Cable trays
- C-profile with serrated edges
- Aesthetic appearance

Technical data

Material composition	S235JR - DIN EN 10025
Surface finish	Hot-dip galvanized, 45 µm - DIN EN ISO 1461

Ordering designation	Height	Length	Material thickness	Weight per metre length	Approvals	Package contents	Sales pack quantity	Item number
MQ-41-F 3m	41 mm	3 m	2 mm	2130 g	RAL-GZ 655-C	1x Install. channel MQ-41-F 3m packed	3 m	304099
MQ-41-F 6m	41 mm	6 m	2 mm	2130 g	RAL-GZ 655-C	1x Install. channel MQ-41-F 6m packed	6 m	304100

Channel connector HDG plus MQN-HDG plus



KEY APPLICATIONS & ADVANTAGES

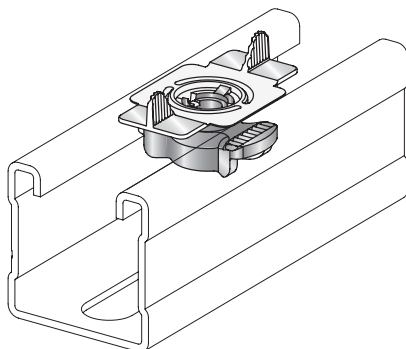
- Recommended for connecting angles to channels
- One-piece component for connecting channels and structural elements
- Simple, compact, time-saving
- Provides a secure hold once pressed in, turned and tightened

Technical data

Material composition	Bolt: grade 8.8 - DIN EN ISO 898, Nut: C4C - DIN EN 10263, Plate: DD11 - DIN EN 10111
Surface finish	Multi-layer coating - performance in salt spray test equal to hot-dip galvanizing
Additional product information	Coating designed for corrosion environment category C3 according to EN ISO 9223

Ordering designation	Wrench size	Tightening torque	Weight	Package contents	Sales pack quantity	Item number
MQN-HDG plus	17 mm	40 Nm	67 g	1x Channel connector MQN-M10-ZND assy	50 pc	387779

Wing nut MQM-HDG plus



KEY APPLICATIONS & ADVANTAGES

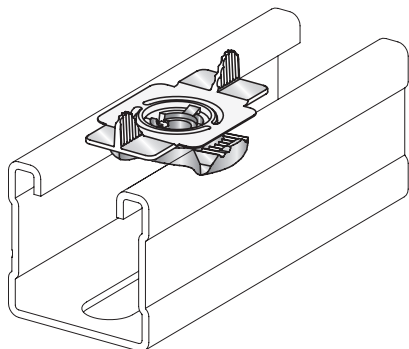
- Simple part for connecting channels to parts of structures
- Simple, compact, time-saving
- Flush design of channel wing nut

Technical data

Material composition	Wings: plastic PA, Nut: QStE 380 TM, SEW 92
Surface finish	Multi-layer coating
Additional product information	Coating designed for corrosion environment category C3 according to EN ISO 9223

Ordering designation	Thread - M	Tightening torque	Weight	Package contents	Sales pack quantity	Item number
MQM-M10 HDG plus	M10	30 Nm	24 g	1x Wing nut MQM-M10-ZND assy	50 pc	298510

Hot-dip galvanized wing nut MQM-F



KEY APPLICATIONS & ADVANTAGES

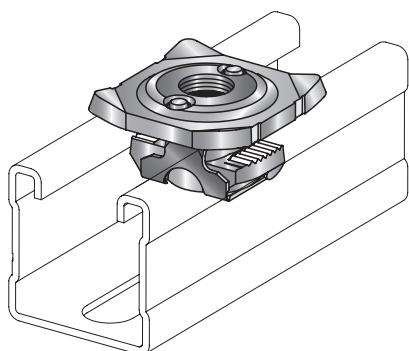
- Simple part for connecting channels to parts of structures
- Simple, compact and time-saving
- Flush design of channel wing nut

Technical data

Material composition	Wings: plastic PA, Nut: C4C - DIN EN 10263
Surface finish	Hot-dip galvanized, 56 µm - ASTM A153

Ordering designation	Thread - M	Tightening torque	Weight	Package contents	Sales pack quantity	Item number
MQM-M12-F	M12	40 Nm	36 g	1x Wing nut MQM-M12-F assy	25 pc	304134

Hot-dip galvanized pipe ring saddle MQA-F



KEY APPLICATIONS & ADVANTAGES

- Various suspensions with threaded rods
- Pipe ring saddle for pipe installation
- For metric threads
- One-piece, time-saving and easy to handle
- Only one type of saddle nut for all MQ channels

Technical data

Material composition	Nut: EN-GJMW-450-7 - DIN EN 1562, Plate: S235JR - DIN EN 10025, Plastic: PB
Surface finish	Hot-dip galvanized, 56 µm - ASTM A153

Ordering designation	Thread - M	Tightening torque	Weight	Package contents	Sales pack quantity	Item number
MQA-M8-F	M8	9 Nm	95 g	1x Pipe ring saddle MQA-M8-F assy	25 pc	304138
MQA-M10-F	M10	18 Nm	92 g	1x Pipe ring saddle MQA-M10-F assy	25 pc	304139
MQA-M12-F	M12	31 Nm	87 g	1x Pipe ring saddle MQA-M12-F assy	25 pc	304140
MQA-M16-F	M16	40 Nm	82 g	1x Pipe ring saddle MQA-M16-F assy	25 pc	304141

Angle HDG MQW 90°-F



KEY APPLICATIONS & ADVANTAGES

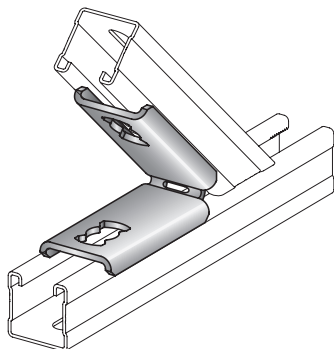
- Assembling frames and other structures
- Quick installation
- Pre-assembly of the MQN HDG plus pushbutton

Technical data

Material composition	S235JR - DIN EN 10025
Surface finish	Hot-dip galvanized, 56 µm - ASTM A153
Material thickness	4 mm

Ordering designation	Angle	Weight	Sales pack quantity	Item number
MQW-2-F	90 °	110 g	20 pc	304171
MQW-3-F	90 °	160 g	20 pc	304172
MQW-4-F	90 °	263 g	10 pc	304174
MQW-8/90-F	90 °	420 g	10 pc	304175

Hot-dip galvanized angle bracket MQW 45°/135°-F



KEY APPLICATIONS & ADVANTAGES

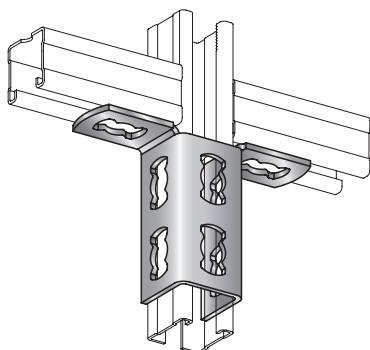
- Assembling frames and other structures
- Connecting channels
- Quick installation
- Pre-assembly of the MQN HDG plus pushbutton is possible

Technical data

Material composition	S235JR - DIN EN 10025
Surface finish	Hot-dip galvanized, 56 µm - ASTM A153
Material thickness	4 mm

Ordering designation	Angle	Weight	Sales pack quantity	Item number
MQW-3/45-F	45 °	155 g	20 pc	304173

Connector 2-D HDG MQV-2D-F



KEY APPLICATIONS & ADVANTAGES

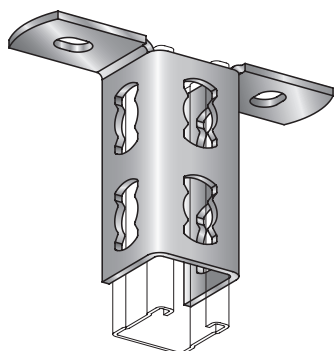
- For clever single-plane channel design
- Universal: few parts for various applications
- Easy to use

Technical data

Material composition	S235JR - DIN EN 10025
Surface finish	Hot-dip galvanized, 56 µm - ASTM A153
Material thickness	4 mm

Ordering designation	Angle	Weight	Sales pack quantity	Item number
MQV-2/2 D-F	90 °	450 g	10 pc	304150
MQV-3/2 D-F	90 °	602 g	10 pc	304152

Hot-dip galvanized rail support MQV 2/2 D-F



KEY APPLICATIONS & ADVANTAGES

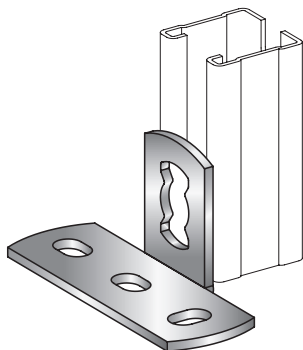
- Connection of channels to any supporting material
- High application flexibility
- Reliable and easy to use

Technical data

Material composition	S235JR - DIN EN 10025
Surface finish	Hot-dip galvanized, 56 µm - ASTM A153
Material thickness	4 mm

Ordering designation	Weight	Package contents	Sales pack quantity	Item number
MQV-2/2 D-14-F	450 g	1x Rail support MQV-2/2 D-14-F	10 pc	304151

Hot-dip galvanized rail support MQP-1-F



KEY APPLICATIONS & ADVANTAGES

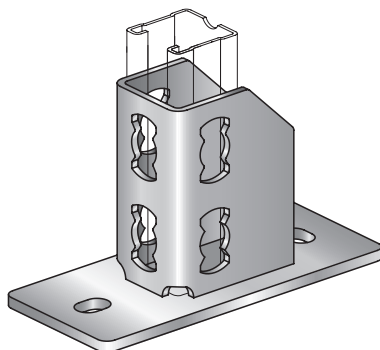
- Connecting channels to virtually any base material
- High application flexibility
- Reliable and easy to use

Technical data

Material composition	S235JR - DIN EN 10025
Surface finish	Hot-dip galvanized, 56 µm - ASTM A153
Material thickness	4 mm

Ordering designation	Weight	Sales pack quantity	Item number
MQP-1/1-F	120 g	20 pc	304161

Hot-dip galvanized rail support MQP-F



KEY APPLICATIONS & ADVANTAGES

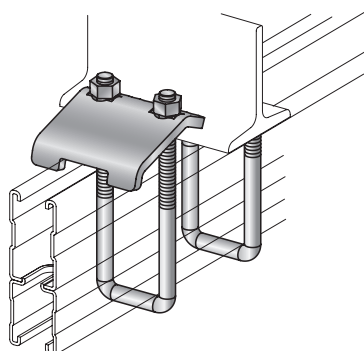
- Connection of channels to any supporting material
- High application flexibility
- Reliable and easy to use

Technical data

Material composition	S235JR - DIN EN 10025
Surface finish	Hot-dip galvanized, 56 µm - ASTM A153
Material thickness	Channel connector: 4 mm, Baseplate: 6 mm

Ordering designation	Weight	Package contents	Sales pack quantity	Item number
MQP-21-72-F	1150 g	1x Rail support MQP-21-72-F assy	12 pc	304165

Hot-dip galvanized beam clamp MQT-F



KEY APPLICATIONS & ADVANTAGES

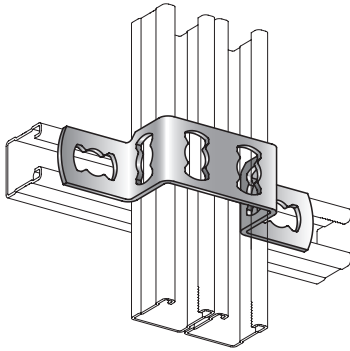
- Fastening channels to steel beams without drilling or welding
- No drilling or welding necessary
- Flexible solution

Technical data

Material composition	U-bolt: S235JRG2 - DIN EN 10025
Surface finish	Hot-dip galvanized, 56 µm - ASTM A153
Material thickness	6 mm
Additional product information	Beam clamps always to be used in pairs

Ordering designation	Thread - M	Wrench size	Tightening torque	Weight	Package contents	Sales pack quantity	Item number
MQT-41-82-F	M10	17 mm	20 Nm	602 g	1x Staple MQT-41-82-F assy	10 pc	304191

Clamp (channel to channel) HDG MQB-F



KEY APPLICATIONS & ADVANTAGES

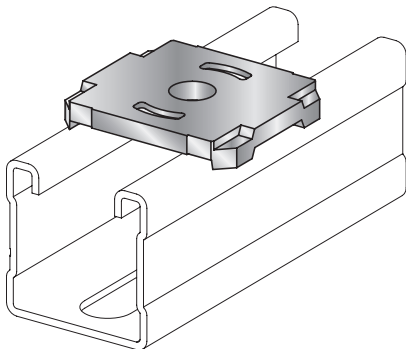
- For cross connection of channels
- Universal: few parts for all applications
- Suitable for various MQ channel profiles

Technical data

Material composition	S235JR - DIN EN 10025
Surface finish	Hot-dip galvanized, 56 µm - ASTM A153
Material thickness	4 mm

Ordering designation	Weight	Package contents	Sales pack quantity	Item number
MQB-21-F	211 g	1x Clamp MQB-21-F	10 pc	304182
MQB-41-F	240 g	1x Clamp MQB-41-F	10 pc	304183

Hot-dip galvanized drilled plate MQZ-L-F



KEY APPLICATIONS & ADVANTAGES

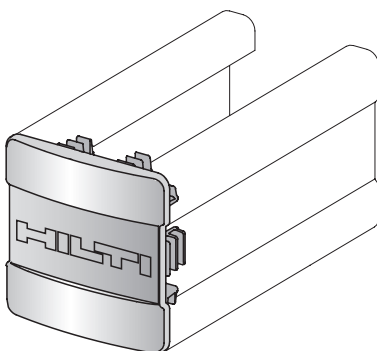
- For fastening metric threaded parts to MQ channel
- Matching items in program
- Suitable for MQ installation channels and brackets

Technical data

Material composition	S235JR - DIN EN 10025
Surface finish	Hot-dip galvanized, 56 µm - ASTM A153

Ordering designation	Hole diameter - D	Weight	Package contents	Sales pack quantity	Item number
MQZ-L11-F	11.5 mm	88 g	1x Plate MQZ-L11-F / MQZ-F3/8"-F	20 pc	304197

Channel end cap MQZ-E



KEY APPLICATIONS & ADVANTAGES

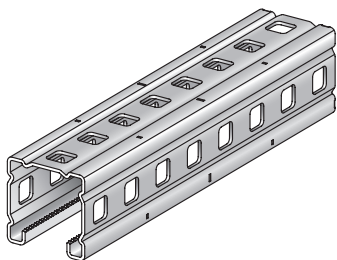
- Provides protection when handling sharp cut edges
- Neat appearance
- Additional protection when handling installation channels with sharp, cut edges

Technical data

Material composition	Polypropylene (PP)
Additional product information	These products are complementary to Hilti channels and sale is possible only together with channels in the ratio of two end caps to one channel For detailed lead time information please contact your Hilti representative

Ordering designation	Weight	Package contents	Sales pack quantity	Item number
MQZ-E21	3 g	1x Cap MQZ-E21	50 pc	370598
MQZ-E31	4 g	1x Cap MQZ-E31	50 pc	369686
MQZ-E41	5 g	1x Cap MQZ-E41	50 pc	369685

Installation channel HDG MC-3D-41 OC-A



KEY APPLICATIONS & ADVANTAGES

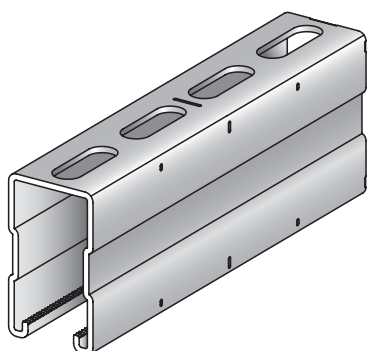
- Cable tray supports outdoors
- Integrated floor supports
- Instrumentation supports outdoors
- Connectivity from all channel sides
- High flexibility in terms of fastening type and direction

Technical data

Material composition	Structural steel with minimum yield strength of 275 N/mm ²
Surface finish	Hot-dip galvanized, 65 µm - ASTM A123

Ordering designation	Height	Length	Material thickness	Weight per metre length	Package contents	Sales pack quantity	Item number
MC-3D-41 OC-A 3m	41 mm	3 m	1.6 mm	1713 g	1x Install. channel MC-3D-41-OC-A-3m	3 m	2063297
MC-3D-41 OC-A 6m	41 mm	6 m	1.6 mm	1760 g	1x Install. channel MC-3D-41-OC-A-6m	6 m	2063296

Installation channel HDG MC-72 OC-A



KEY APPLICATIONS & ADVANTAGES

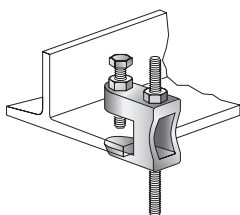
- Cable tray supports outdoors
- Integrated floor supports
- Instrumentation supports outdoors
- Serrated C-section profile
- High load capacity

Technical data

Material composition	Structural steel with minimum yield strength of 235 N/mm ²
Surface finish	Hot-dip galvanized, 65 µm - ASTM A123

Ordering designation	Height	Length	Material thickness	Weight per metre length	Package contents	Sales pack quantity	Item number
MC-72 OC-A 6m	72 mm	6 m	2.75 mm	4108 g	1x Install. channel MC-72 OC-A-6m	6 m	2063299

Beam clamp MAB



KEY APPLICATIONS & ADVANTAGES

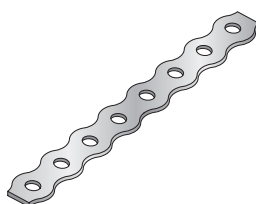
- For fastening to steel beams without drilling or welding
- Installation on steel beams without drilling or welding
- Through-hole without thread

Technical data

Material composition	EN-GJMB - EN 1562
Surface finish	Galvanized

Ordering designation	Thread - M	Hole diameter - D	X	Y	Maximum tensile load - F	Weight	Package contents	Sales pack quantity	Item number
MAB-11	M10	11 mm	23.4 mm	19.5 mm	2.5 kN	152 g	1x Staple MAB-11 assy	12 pc	375957
MAB-13	M10	13 mm	35 mm	26 mm	3.5 kN	219 g	1x Staple MAB-13 assy	12 pc	375958
MAB-17	M12	17 mm	30 mm	28.5 mm	5.5 kN	352 g	1x Staple MAB-17 assy	12 pc	228155

Perforated band LB



KEY APPLICATIONS & ADVANTAGES

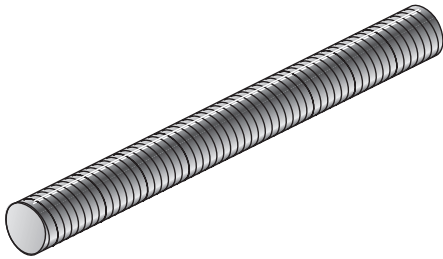
- For fastening pipes to ceilings
- Easy and fast installation possible

Technical data

Material composition	DX51D+Z275-N-A - DIN EN 10346
Surface finish	Galvanized

Ordering designation	Width - B	Hole diameter - D	X	Cross section thickness - s	Length - L	Maximum tensile load - F	Sales pack quantity	Item number
LB 17	17 mm	7 mm	10 mm	1 mm	10000 mm	1.2 kN	10 pc	57712
LB 26	26 mm	8.2 mm	17.2 mm	1.2 mm	10000 mm	2.2 kN	10 pc	57713

Threaded rod 4.8 AM

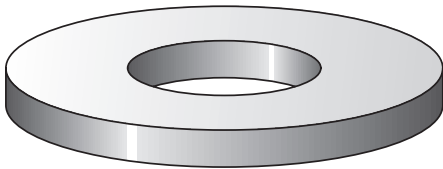


Technical data

Material composition	Steel grade 4.8 - DIN 976-1
Surface finish	Galvanized

Ordering designation	Thread - M	Length - L	Weight	Package contents	Sales pack quantity	Item number
AM8x3000 4.8 zincd	M8	3000 mm	930 g	1x Threaded stud M8X3000	20 pc	216415
AM10x3000 4.8 zincd	M10	3000 mm	1469 g	1x Threaded stud M10X3000	20 pc	216418
AM12x3000 4.8 zincd	M12	3000 mm	2129 g	1x Threaded stud M12X3000	15 pc	216421
AM16x3000 4.8 zincd	M16	3000 mm	3933 g	1x Threaded stud M16X3000	5 pc	216424

Flat washer

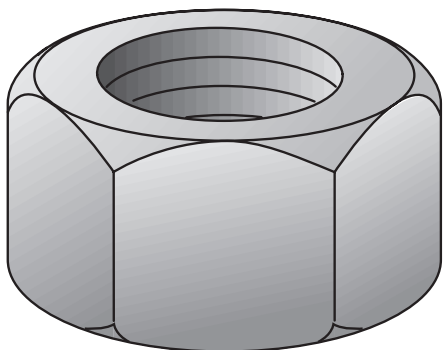


Technical data

Material composition	Steel - DIN EN ISO 7089
Surface finish	Galvanized

Ordering designation	Inside diameter - DI	Outside diameter - DA	Cross section thickness - s	Weight	Package contents	Sales pack quantity	Item number
A 8,4/16 zincd	8.4 mm	16 mm	1.6 mm	2 g	1x Washer 8	200 pc	282850
A 10,5/20 zincd	10.5 mm	20 mm	2 mm	3 g	1x Washer 10	100 pc	282851
A 13/24 zincd	13 mm	24 mm	2.5 mm	6 g	1x Washer 12	100 pc	282852
A 17/30 zincd	17 mm	30 mm	3 mm	10 g	1x Washer 16	100 pc	282853
A 21/37 zincd	21 mm	37 mm	3 mm	15 g	1x Washer 20	50 pc	282854
A 25/44 zincd	25 mm	44 mm	4 mm	29 g	1x Washer 24	50 pc	282855

Hexagon nut grade 8 DIN 934

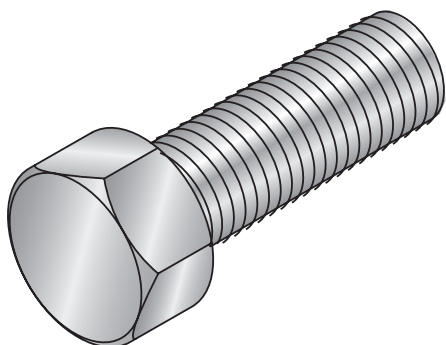


Technical data

Material composition	Steel grade 8
Surface finish	Galvanized

Ordering designation	Thread - M	Height - H	Wrench size - W	Weight	Package contents	Sales pack quantity	Item number
M8 zincd	M8	7 mm	13 mm	5 g	1x Hexagon nut M8	100 pc	216465
M10 zincd	M10	8 mm	17 mm	10 g	1x Hexagon nut M10	100 pc	216466
M12 zincd	M12	10 mm	19 mm	16 g	1x Hexagon nut M12	100 pc	216467
M16 zincd	M16	13 mm	24 mm	30 g	1x Hexagon nut M16	50 pc	216468
M20 zincd	M20	16 mm	30 mm	58 g	1x Hexagon nut M20	50 pc	216469
M24 zincd	M24	19 mm	36 mm	97 g	1x Hexagon nut M24	50 pc	216470

Hexagon bolt

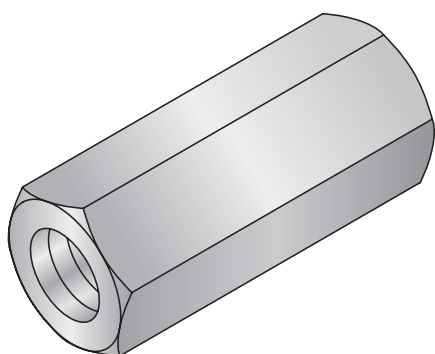


Technical data

Material composition	Steel grade 8.8
Surface finish	Galvanized

Ordering designation	Thread - M	Thread length - L	Height - H	Wrench size - W	Weight	Package contents	Sales pack quantity	Item number
M6x25 zincd	M6	25 mm	4 mm	10 mm	7 g	1x Hexagon screw M6X25	100 pc	216444
M8x20 zincd	M8	20 mm	5 mm	13 mm	12 g	1x Hexagon screw M8x20	100 pc	216447
M8x35 zincd	M8	35 mm	5 mm	13 mm	16 g	1x Hexagon screw M8x35	100 pc	216449
M10x25 zincd	M10	25 mm	6 mm	17 mm	25 g	1x Hexagon screw M10x25	100 pc	216454
M10x35 zincd	M10	35 mm	6 mm	17 mm	30 g	1x Hexagon screw M10x35	100 pc	216455
M12x25 zincd	M12	25 mm	8 mm	19 mm	36 g	1x Hexagon screw M12x25	50 pc	216458

Spacer coupling



KEY APPLICATIONS & ADVANTAGES

- Quick connection of threaded rod in hanging installations

Technical data

Material composition	Steel grade 4.6
Surface finish	Galvanized

Ordering designation	Thread - M	Length - L	Wrench size - W	Weight	Package contents	Sales pack quantity	Item number
M8x40	M8	40 mm	11 mm	18 g	1x Spacer coupling M8x40	50 pc	432188
M10x30	M10	30 mm	13 mm	18 g	1x Spacer coupling M10x30	50 pc	216704

Eye nut

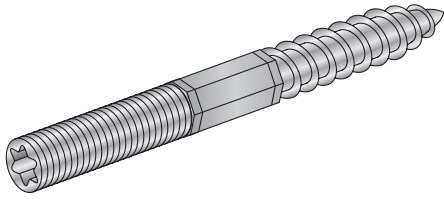


Technical data

Material composition	Steel C15E
Surface finish	Galvanized
Additional product information	According to DIN 582

Ordering designation	Thread - M	Diameter - D	Maximum tensile load - F	Weight	Package contents	Sales pack quantity	Item number
M8 zincd	M8	20 mm	1.4 kN	53 g	1x Eye nut M8	40 pc	365873
M10 zincd	M10	25 mm	2.3 kN	94 g	1x Eye nut M10	20 pc	365808
M12 zincd	M12	30 mm	3.4 kN	155 g	1x Eye nut M12	10 pc	365811
M16 zincd	M16	35 mm	7 kN	250 g	1x Eye nut M16	10 pc	365809
M20 zincd	M20	40 mm	12 kN	360 g	1x Eye nut M20	6 pc	365810
M24 zincd	M24	50 mm	18 kN	766 g	1x Eye nut M24	4 pc	365874

Hanger bolt

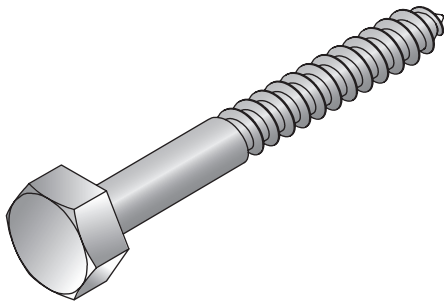


Technical data

Material composition	Steel grade 4.6
Surface finish	Galvanized

Ordering designation	Thread - M	Length - L	Recess A	B	Wrench size - W	Weight	Package contents	Sales pack quantity	Item number
M8x50 4.6 zincd	M8	50 mm	TX25	15 mm	30 mm	11 g	1x Hanger bolt M8x50	100 pc	216360
M8x60 4.6 zincd	M8	60 mm	TX25	20 mm	30 mm 6 mm	13 g	1x Hanger bolt M8x60	100 pc	216361
M8x80 4.6 zincd	M8	80 mm	TX25	30 mm	40 mm 6 mm	19 g	1x Hanger bolt M8x80	100 pc	216362
M10x80 4.6 zincd	M10	80 mm	TX25	30 mm	40 mm 8 mm	31 g	1x Hanger bolt M10x80	50 pc	216367
M10x100 4.6 zincd	M10	100 mm	TX25	30 mm	60 mm 8 mm	38 g	1x Hanger bolt M10x100	50 pc	216368

Hex head wood screw



Technical data

Material composition	Steel
Surface finish	Galvanized

Ordering designation	Thread length - L	Diameter - D	A	Height - H	Wrench size - W	Weight	Package contents	Sales pack quantity	Item number
M8x50 zincd	40 mm	8 mm	50 mm	6 mm	13 mm	17 g	1x Hex head wood screw 8x50	100 pc	47429
M8x60 zincd	55 mm	8 mm	60 mm	6 mm	13 mm	21 g	1x Hex head wood screw 8x60	100 pc	47430
M8x100 zincd	70 mm	8 mm	100 mm	6 mm	13 mm	32 g	1x Hex head wood screw 8x100	50 pc	47432

Threaded rod cutter NK-M/MRC



KEY APPLICATIONS & ADVANTAGES

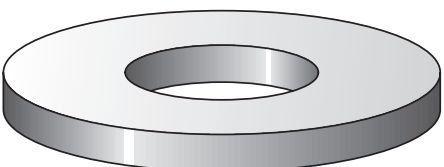
- Cutting threaded rods
- Cuts M6/M8/M10 threaded rods easily without burring or producing swarf
- Supplied complete with two pre-assembled dies (M8/M10)

Technical data

Material composition	Steel
Surface finish	Painted

Ordering designation	Thread - M	Weight	Package contents	Sales pack quantity	Item number
MRC - M8/10		4530 g	1x Rod cutter M8/M10	1 pc	295418
MRC - M8	M8	42 g		1 pc	295412
MRC - M10	M10	42 g		1 pc	295413

Flat washer similar to ISO 7089 (HDG)

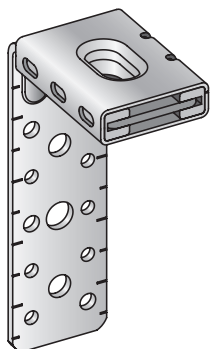


Technical data

Material composition	Steel
Surface finish	Hot-dip galvanized

Ordering designation	Inside diameter - DI	Outside diameter - DA	Cross section thickness - s	Weight	Sales pack quantity	Item number
A 10,5/28-F	10.5 mm	28 mm	2 mm	8 g	100 pc	2063247

Air duct bracket MVA-LC



KEY APPLICATIONS & ADVANTAGES

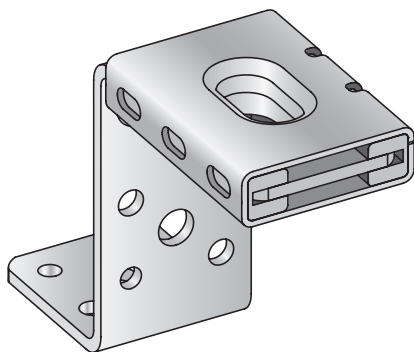
- For fastening rectangular air ducts to ceilings
- Convenient solution for fastening ventilation ducts directly to ceilings, suspended on threaded rods or in conjunction with MQ system for rising ducts
- Scale for precise alignment and stand-off installation

Technical data

Material composition	DD11 steel - DIN EN 10111, EPDM
Surface finish	Galvanized
Temperature resistance	-40 - 110 °C
Hardness insulation material	40° ±5° Shore A
Noise reduction	12 dB (A)
Approvals	Acoustic insulation DIN 4109 inspected

Ordering designation	Maximum load - F	Thread - M	Weight	Package contents	Sales pack quantity	Item number
MVA-LC 100	600 N	M8, M10	144 g	1x Air duct bracket MVA-LC100 assy	25 pc	386534

Air duct bracket MVA-ZC



KEY APPLICATIONS & ADVANTAGES

- For the installation of rectangular air ducts to ceilings
- Quick through-fastening for M8/M10 threaded rods
- Movable cage allows compensation of dimensional tolerances in the structure and avoidance of rebars during installation

Technical data

Material composition	DD11 steel - DIN EN 10111, EPDM
Surface finish	Galvanized
Temperature resistance	-40 - 110 °C
Hardness insulation material	40° ±5° Shore A
Noise reduction	12 dB (A)

Ordering designation	Maximum load - F	Thread - M	Weight	Package contents	Sales pack quantity	Item number
MVA-ZC	600 N	M8, M10	132 g	1x Air duct bracket MVA-ZC assy	25 pc	386531

Residential pipe ring MP-HI



KEY APPLICATIONS & ADVANTAGES

- Light-duty pipe installation up to 6" diameter
- Fastening drinking water pipes and heating pipes in residential and industrial construction
- Gas distribution pipes
- Two-screw pipe ring with side swivelling mechanism
- Safe click closure for easy and fast pre-fixing

Technical data

Material composition	DC01 - DIN EN 10130
Surface finish	Galvanized
Temperature resistance	-40 - 110 °C
Hardness insulation material	45° ±5° Shore A
Noise reduction	17 dB (A)
Approvals	Acoustic insulaton DIN 4109 inspected, Fire class B2, RAL-GZ 655-B, RAL-GZ 656
Insulation material	EPDM rubber

Ordering designation	Clamping range - D	Nominal pipe size (imperial)	Width - B	Maximum load - F	Clamping screw	Sales pack quantity	Item number
MP-HI 8-12 M8/M10	8 - 12 mm		52 mm	600 N	M5	25 pc	386402
MP-HI 12-16 M8/M10	12 - 16 mm	1/4 in	52 mm	600 N	M5	25 pc	386403
MP-HI 16-20 M8/M10	16 - 20 mm	3/8 in	57 mm	600 N	M5	25 pc	386404
MP-HI 20-25 M8/M10	20 - 25 mm	1/2 in	62 mm	600 N	M5	25 pc	386405
MP-HI 25-31 M8/M10	25 - 31 mm	3/4 in	69 mm	600 N	M5	25 pc	386406
MP-HI 31-38 M8/M10	31 - 38 mm	1 in	76 mm	600 N	M5	25 pc	386407
MP-HI 38-45 M8/M10	38 - 45 mm	1-1/4 in	86 mm	750 N	M5	25 pc	386408
MP-HI 45-52 M8/M10	45 - 52 mm	1-1/2 in	93 mm	750 N	M5	25 pc	386409
MP-HI 52-59 M8/M10	52 - 59 mm		100 mm	750 N	M5	25 pc	386410
MP-HI 59-66 M8/M10	59 - 66 mm	2 in	108 mm	750 N	M5	10 pc	386411
MP-HI 66-75 M8/M10	66 - 75 mm		128 mm	1200 N	M6	10 pc	386412
MP-HI 75-84 M8/M10	75 - 84 mm	2-1/2 in	137 mm	1200 N	M6	10 pc	386413
MP-HI 84-93 M8/M10	84 - 93 mm	3 in	146 mm	1200 N	M6	10 pc	386414
MP-HI 93-101 M8/M10	93 - 101 mm		155 mm	1200 N	M6	10 pc	386415
MP-HI 101-110 M8/M10	101 - 110 mm		164 mm	1200 N	M6	10 pc	386416
MP-HI 110-119 M8/M10	110 - 119 mm	4 in	175 mm	1500 N	M6	10 pc	386417
MP-HI 119-129 M8/M10	119 - 129 mm		185 mm	1500 N	M6	10 pc	386418
MP-HI 129-137 M8/M10	129 - 137 mm		193 mm	1500 N	M6	10 pc	386419
MP-HI 137-145 M8/M10	137 - 145 mm	5 in	203 mm	1500 N	M6	10 pc	386420
MP-HI 145-155 M8/M10	145 - 155 mm		211 mm	1500 N	M6	10 pc	386421
MP-HI 155-163 M8/M10	155 - 163 mm		220 mm	1500 N	M6	10 pc	386422
MP-HI 163-172 M8/M10	163 - 172 mm	6 in	228 mm	1500 N	M6	10 pc	386423

Pipe ring MP-PI



KEY APPLICATIONS & ADVANTAGES

- Fresh water distribution pipes
- Waste water distribution pipes
- Heating and gas distribution pipes
- Securely fixed rubber inlay - no dropping out
- High-quality product with third-party approvals

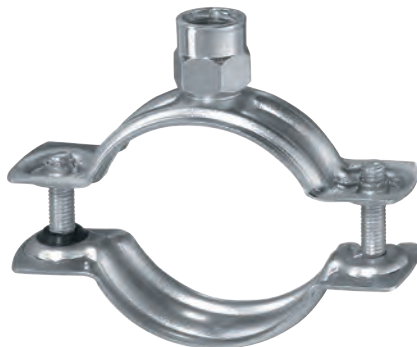
Technical data

Material composition	SPCC-SD FB - Q/BQB402, DC01 - EN 10130
Surface finish	Galvanized
Temperature resistance	-40 - 110 °C
Hardness insulation material	75° ±5° Shore A
Noise reduction	16 dB (A)
Approvals	Acoustic insulaton DIN 4109 inspected, Fire Class E
Additional product information	The maximum load of 5000 N in accordance with RAL-GZ 655-B can be achieved if pipe rings 8 inches in diameter and larger are mounted on two threaded rods
Insulation material	EPDM

Ordering designation	Clamping range - D	Nominal pipe size (imperial)	Width - B	Maximum load - F	Distance between holes - A	Sales pack quantity	Item number
MP-PI 11-15 1/4" M8	11 - 15 mm	1/4 in	54 mm	750 N	39 mm	150 pc	2073431
MP-PI 11-15 1/4" M8/M10	11 - 15 mm	1/4 in	54 mm	750 N	39 mm	150 pc	2126900

Ordering designation	Clamping range - D	Nominal pipe size (imperial)	Width - B	Maximum load - F	Distance between holes - A	Sales pack quantity	Item number
MP-PI 16-20 3/8" M8	16 - 20 mm	3/8 in	58 mm	750 N	42 mm	150 pc	2073432
MP-PI 16-20 3/8" M8/M10	16 - 20 mm	3/8 in	58 mm	750 N	42 mm	150 pc	2126901
MP-PI 20-24 1/2" M8/M10	20 - 24 mm	1/2 in	62 mm	750 N	47 mm	150 pc	2126902
MP-PI 25-28 3/4" M8/M10	25 - 28 mm	3/4 in	68 mm	750 N	53 mm	150 pc	2126903
MP-PI 32-36 1" M8	32 - 36 mm	1 in	76 mm	750 N	61 mm	150 pc	2073435
MP-PI 32-36 1" M8/M10	32 - 36 mm	1 in	76 mm	750 N	61 mm	150 pc	2126904
MP-PI 38-46 1 1/4" M8	38 - 46 mm	1-1/4 in	91 mm	750 N	74 mm	100 pc	2073436
MP-PI 38-46 1 1/4" M8/M10	38 - 46 mm	1-1/4 in	91 mm	750 N	74 mm	100 pc	2126905
MP-PI 48-53 1 1/2" M8/M10	48 - 53 mm	1-1/2 in	98 mm	750 N	81 mm	100 pc	2126906
MP-PI 54-58 M8	54 - 58 mm		105 mm	1250 N	87 mm	100 pc	2073438
MP-PI 54-58 M8/M10	54 - 58 mm		105 mm	1250 N	87 mm	100 pc	2126907
MP-PI 59-66 2" M8	59 - 66 mm	2 in	111 mm	1250 N	94 mm	100 pc	2073439
MP-PI 59-66 2" M8/M10	59 - 66 mm	2 in	111 mm	1250 N	94 mm	100 pc	2126908
MP-PI 67-73 M8/M10	67 - 73 mm		119 mm	1250 N	101 mm	50 pc	2073470
MP-PI 75-80 2 1/2" M8/M10	75 - 80 mm	2-1/2 in	124 mm	1250 N	106 mm	50 pc	2073471
MP-PI 81-87 M8/M10	81 - 87 mm		134 mm	1250 N	116 mm	50 pc	2073472
MP-PI 87-92 3" M8/M10	87 - 92 mm	3 in	137 mm	1250 N	119 mm	50 pc	2073473
MP-PI 99-105 3 1/2" M8/M10	99 - 105 mm	3-1/2 in	150 mm	1250 N	131 mm	50 pc	2073474
MP-PI 107-115 4" M8/M10	107 - 115 mm	4 in	163 mm	1500 N	145 mm	50 pc	2073475
MP-PI 120-128 M8/M10	120 - 128 mm		185 mm	1500 N	167 mm	50 pc	2073476
MP-PI 129-134 M8/M10	129 - 134 mm		188 mm	1500 N	170 mm	50 pc	2073477
MP-PI 135-143 5" M8/M10	135 - 143 mm	5 in	201 mm	1500 N	183 mm	50 pc	2073478
MP-PI 149-161 M8/M10	149 - 161 mm		212 mm	1500 N	195 mm	50 pc	2073479
MP-PI 162-170 6" M8/M10	162 - 170 mm	6 in	228 mm	1500 N	210 mm	50 pc	2073480
MP-PI 192-204 M8/M10	192 - 204 mm		261 mm	1750 N	243 mm	25 pc	2073482
MP-PI 242-253 M12	242 - 253 mm		326 mm	2500 N	303 mm	10 pc	2073485
MP-PI 313-326 12" M12	313 - 326 mm	12 in	407 mm	2500 N	384 mm	10 pc	2073487

Residential pipe ring assy MP-H



KEY APPLICATIONS & ADVANTAGES

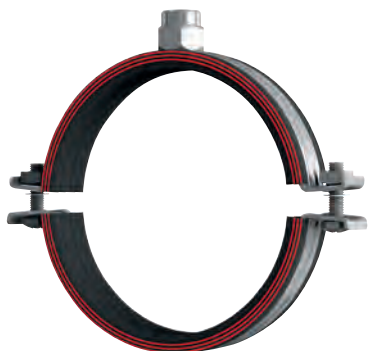
- Light-duty pipe installation up to 6"
- Heating and plumbing pipe installation
- Gas distribution pipes
- Two-screw pipe ring with side swivelling mechanism
- Safe click closure for easy and fast pre-fixing

Technical data

Material composition	DC01 - DIN EN 10130
Surface finish	Galvanized

Ordering designation	Clamping range - D	Nominal pipe size (imperial)	Width - B	Maximum load - F	Clamping screw	Sales pack quantity	Item number
MP-H 16-20 M8/M10	16 - 20 mm	3/8 in	52 mm	600 N	M5	25 pc	386424
MP-H 20-25 M8/M10	20 - 25 mm	1/2 in	57 mm	600 N	M5	25 pc	386425
MP-H 25-31 M8/M10	25 - 31 mm	3/4 in	62 mm	600 N	M5	25 pc	386426
MP-H 31-38 M8/M10	31 - 38 mm	1 in	69 mm	600 N	M5	25 pc	386427
MP-H 38-45 M8/M10	38 - 45 mm	1-1/4 in	76 mm	600 N	M5	25 pc	386428
MP-H 45-52 M8/M10	45 - 52 mm	1-1/2 in	86 mm	750 N	M5	25 pc	386429
MP-H 52-59 M8/M10	52 - 59 mm		93 mm	750 N	M5	25 pc	386430
MP-H 59-66 M8/M10	59 - 66 mm	2 in	100 mm	750 N	M5	10 pc	386431
MP-H 66-74 M8/M10	66 - 74 mm		108 mm	750 N	M5	10 pc	386432
MP-H 74-83 M8/M10	74 - 83 mm	2-1/2 in	128 mm	1200 N	M6	10 pc	386433
MP-H 83-92 M8/M10	83 - 92 mm	3 in	137 mm	1200 N	M6	10 pc	386434
MP-H 92-101 M8/M10	92 - 101 mm		146 mm	1200 N	M6	10 pc	386435
MP-H101-110 M8/M10	101 - 110 mm		155 mm	1200 N	M6	10 pc	386436
MP-H110-119 M8/M10	110 - 119 mm	4 in	164 mm	1200 N	M6	10 pc	386437
MP-H127-137 M8/M10	127 - 137 mm		185 mm	1500 N	M6	10 pc	386439
MP-H137-145 M8/M10	137 - 145 mm	5 in	193 mm	1500 N	M6	10 pc	386440
MP-H145-155 M8/M10	145 - 155 mm		203 mm	1500 N	M6	10 pc	386441
MP-H155-163 M8/M10	155 - 163 mm		211 mm	1500 N	M6	10 pc	386442

Heavy-duty pipe ring MP-MI M10/M12



KEY APPLICATIONS & ADVANTAGES

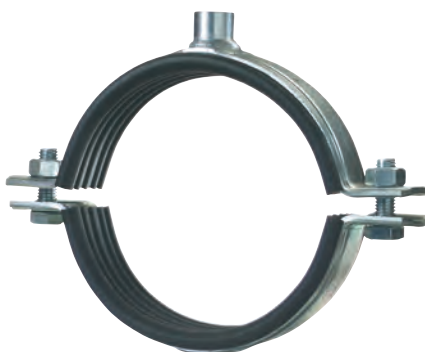
- Heavy-duty pipe installations with diameters up to 168 mm
- Installation of industrial pipework
- Process and control lines
- M8 clamping screws, secured against loss, with combination cross-recess head
- Welded-on heavy-duty nuts for clamping screw sizes 68 / 72 and above

Technical data

Material composition	S235JRG - DIN EN 10025
Surface finish	Galvanized
Temperature resistance	-40 - 110 °C
Hardness insulation material	50° ±5° Shore A
Noise reduction	19 dB (A)
Approvals	Acoustic insulaton DIN 4109 inspected, Fire class B2
Insulation material	EPDM rubber

Ordering designation	Clamping range - D	Nominal pipe size (imperial)	Width - B	Maximum load - F	Clamping screw	Sales pack quantity	Item number
MP-MI 3/8" G	15 - 19 mm	3/8 in	64 mm	1800 N	M8	25 pc	20843
MP-MI 159 G	156 - 162 mm		223 mm	2400 N	M8	10 pc	20885

Heavy-duty pipe ring, metric MP-MXI



KEY APPLICATIONS & ADVANTAGES

- Heavy-duty pipe installations in diameters up to 508 mm
- Process and control lines
- Heavy-duty pipe runs
- Solid connection boss, welded all round
- Strong clamping bolts for high loads

Technical data

Material composition	DD11 - DIN EN 10111
Surface finish	Galvanized
Temperature resistance	-50 - 120 °C
Hardness insulation material	50° ±5° Shore A
Noise reduction	16 dB (A)
Approvals	Acoustic insulaton DIN 4109 inspected, Fire class B2
Insulation material	EPDM rubber

Ordering designation	Clamping range - D	Width - B	Maximum load - F	Distance between holes - A	Clamping screw	Sales pack quantity	Item number
MP-MXI 193.7 M16	192 - 200 mm	303 mm	7500 N	264 mm	M16	10 pc	372236
MP-MXI 244.5 M16	244 - 253 mm	355 mm	7500 N	317 mm	M16	10 pc	372239
MP-MXI 275 M16	275 - 282 mm	384 mm	7500 N	346 mm	M16	10 pc	372241

Heavy-duty pipe ring, metric MP-MX



KEY APPLICATIONS & ADVANTAGES

- Industrial pipe fitting
- Mechanical installations
- Process and control lines
- Solid connection boss, welded all round
- Strong clamping bolts for high loads

Technical data

Material composition	DD11 - DIN EN 10111
Surface finish	Galvanized
Approvals	RAL-GZ 655-B

Ordering designation	Clamping range - D	Width - B	Maximum load - F	Distance between holes - A	Clamping screw	Sales pack quantity	Item number
MP-MX 193.7 M16	192 - 200 mm	290 mm	11000 N	252 mm	M16	10 pc	372282
MP-MX 219 M16	219 - 228 mm	318 mm	11000 N	280 mm	M16	10 pc	372284

Sprinkler pipe hanger LH



KEY APPLICATIONS & ADVANTAGES

- Sprinkler installations
- Cost-efficient pipe installation thanks to pre-assembled sprinkler band hangers
- Coordinated system of sprinkler components from one supplier - reduces administrative work as you are dealing with only one company

Technical data

Material composition	Carbon steel type B - ASTM A653M-06a, SGCC - JISG 3302
Surface finish	Galvanized
Approvals	UL approved EX15279, FM approved

Ordering designation	Clamping range - D	Nominal pipe size (imperial)	Distance centre pipe to top - h	Maximum load - F	Weight	Sales pack quantity	Item number
LH 1" M10	34 - 35 mm	1 in	67 mm	2000 N	0.05 kg	100 pc	388614
LH 1-1/4" M10	42 - 45 mm	1-1/4 in	71 mm	2000 N	0.05 kg	100 pc	388615
LH 1-1/2" M10	48 - 51 mm	1-1/2 in	77 mm	2000 N	0.05 kg	100 pc	388616
LH 2" M10	57 - 64 mm	2 in	79 mm	2000 N	0.06 kg	100 pc	388617
LH 2-1/2" M10	70 - 76 mm	2-1/2 in	98 mm	4500 N	0.12 kg	100 pc	388618
LH 3" M10	83 - 89 mm	3 in	117 mm	4500 N	0.13 kg	50 pc	388619
LH 4" M10	106 - 114 mm	4 in	131 mm	4500 N	0.15 kg	50 pc	388620

Sprinkler pipe hanger M10, M12, M16 MP-SP



KEY APPLICATIONS & ADVANTAGES

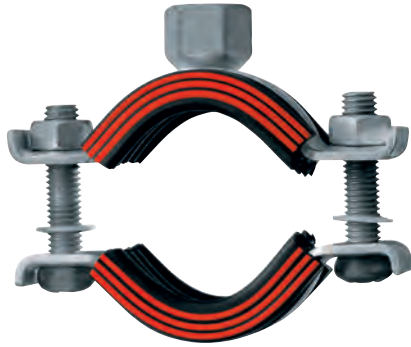
- Sprinkler installations
- Insert the pipe, press to close, click - that's all Time-saving solution
- Simple levelling with the new height adjuster

Technical data

Material composition	DX51D Z275 - DIN EN 10327
Surface finish	Galvanized
Approvals	FM approved, UL approved EX2709, VDS approved G4930027

Ordering designation	Clamping range - D	Nominal pipe size (imperial)	Distance centre pipe to top - h	Maximum load - F	Weight	Sales pack quantity	Item number
MP-SP 3/4"-M10	27 - 28 mm	3/4 in	50 mm	2000 N	0.07 kg	100 pc	229041
MP-SP 1 1/2"-M10	48 - 51 mm	1-1/2 in	65 mm	2000 N	0.09 kg	50 pc	229044
MP-SP 2 1/2"-M10	70 - 76 mm	2-1/2 in	78 mm	5000 N	0.17 kg	25 pc	216597
MP-SP 4"-M10	108 - 114 mm	4 in	131 mm	5000 N	0.24 kg	25 pc	216600
MP-SP 6"-M12	165 - 169 mm	6 in	142 mm	6000 N	0.36 kg	25 pc	216604

Hot-dip galvanized heavy-duty pipe ring MP-MI-F



KEY APPLICATIONS & ADVANTAGES

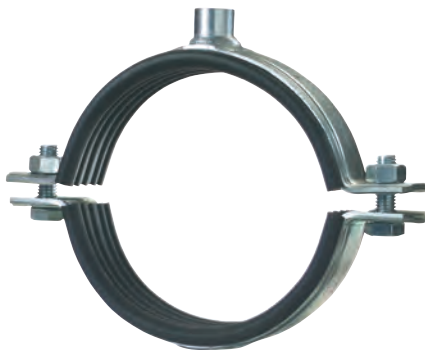
- Heavy-duty installations up to 250 mm diameter
- Indoor applications in humid atmospheres (moderate condensation)
- Outdoor applications in moderately corrosive conditions
- Solid welded-on connection boss
- Good resistance to corrosion (hot-dip galvanized to 45 µm)

Technical data

Material composition	S235JR - DIN EN 10025
Surface finish	Hot-dip galvanized, 45 µm - DIN EN ISO 1461
Temperature resistance	-50 - 120 °C
Hardness insulation material	50° ±5° Shore A
Noise reduction	18 dB (A)
Approvals	Acoustic insulation DIN 4109 inspected, Fire class B2
Insulation material	EPDM rubber

Ordering designation	Clamping range - D	Nominal pipe size (imperial)	Width - B	Maximum load - F	Clamping screw	Sales pack quantity	Item number
MP-MI-F 1 1/2"	48 - 54 mm	1-1/2 in	101 mm	1800 N	M8	25 pc	304262
MP-MI-F 2"	57 - 64 mm	2 in	111 mm	1800 N	M8	10 pc	304264

Heavy-duty pipe ring, metric HDG MP-MXI-F



KEY APPLICATIONS & ADVANTAGES

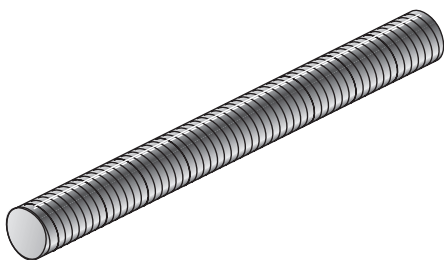
- Heavy-duty pipe installations in diameters up to 508 mm
- Indoor applications in humid atmospheres (moderate condensation)
- Outdoor applications in moderately corrosive conditions
- Solid connection boss, welded all round
- Strong clamping bolts for high loads

Technical data

Material composition	DD11 - DIN EN 10111
Surface finish	Hot-dip galvanized, 45 µm - DIN EN ISO 1461
Temperature resistance	-50 - 120 °C
Hardness insulation material	50° ±5° Shore A
Noise reduction	16 dB (A)
Approvals	Acoustic insulation DIN 4109 inspected, Fire class B2
Insulation material	EPDM rubber

Ordering designation	Clamping range - D	Nominal pipe size (imperial)	Width - B	Maximum load - F	Distance between holes - A	Sales pack quantity	Item number
MP-MXI-F 4" M16	108 - 116 mm	4 in	210 mm	3100 N	172 mm	25 pc	374900

Threaded rod 4.8 HDG AM

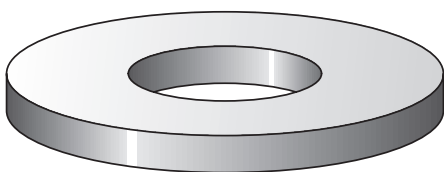


Technical data

Material composition	Steel grade 4.8
Surface finish	Hot-dip galvanized

Ordering designation	Thread - M	Length - L	Weight	Package contents	Sales pack quantity	Item number
AM10x1000-F 4.8	M10	1000 mm	435 g	1x Threaded stud M10X1000	20 pc	304773
AM12x1000-F 4.8	M12	1000 mm	687 g	1x Threaded stud M12X1000	15 pc	304774
AM16x2000-F 4.8	M16	2000 mm	2622 g	1x Threaded stud M16X2000	5 pc	304777

Flat washer ISO 7089 (HDG)

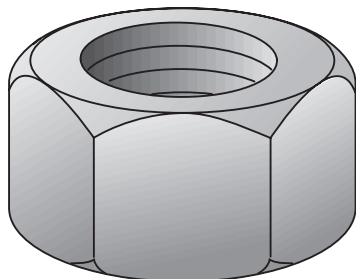


Technical data

Material composition	Steel - DIN EN ISO 7089
Surface finish	Hot-dip galvanized

Ordering designation	Inside diameter - DI	Outside diameter - DA	Cross section thickness - s	Weight	Package contents	Sales pack quantity	Item number
A 8,4/16-F	8.4 mm	16 mm	1.6 mm	2 g		100 pc	304769
A 10,5/20-F	10.5 mm	20 mm	2 mm	3 g	1x Washer 10 hot dip galv	100 pc	304770
A 13/24-F	13 mm	24 mm	2.5 mm	6 g	1x Washer 12 hot dip galv	100 pc	304771

Hexagon nut DIN 934 HDG

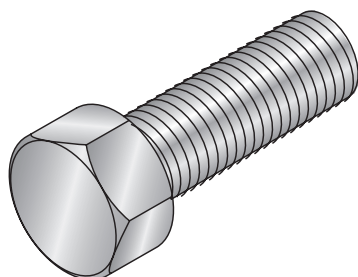


Technical data

Material composition	Steel grade 8
Surface finish	Hot-dip galvanized - DIN EN ISO 10684

Ordering designation	Thread - M	Height - H	Wrench size - W	Weight	Package contents	Sales pack quantity	Item number
M8-F	M8	7 mm	13 mm	5 g	1x Hexagon nut M8	100 pc	304764
M10-F	M10	8 mm	17 mm	11 g	1x Hexagon nut M10	100 pc	304765
M12-F	M12	10 mm	19 mm	16 g		100 pc	304766
M16-F	M16	13 mm	24 mm	30 g	1x Hexagon nut M16	50 pc	304767

Hexagon screw DIN 933 HDG

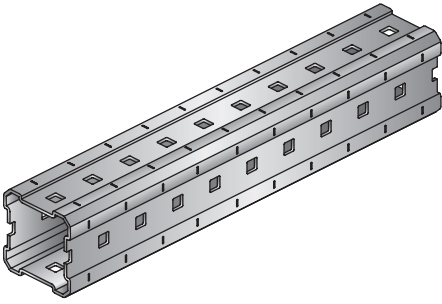


Technical data

Material composition	Steel grade 8.8
Surface finish	Hot-dip galvanized

Ordering designation	Thread - M	Thread length - L	Height - H	Wrench size - W	Weight	Package contents	Sales pack quantity	Item number
M10x20-F	M10	20 mm	6 mm	17 mm	20 g	1x Hexagon screw M10X20 hot dip galv	100 pc	2063241
M10x25-F	M10	25 mm	6 mm	17 mm	23 g	1x Hexagon screw M10x25-8.8U-tZn	100 pc	304788
M12x25-F	M12	25 mm	8 mm	19 mm	35 g	1x Hexagon screw M12x25-8.8U-tZn	50 pc	304789

Girder MI



KEY APPLICATIONS & ADVANTAGES

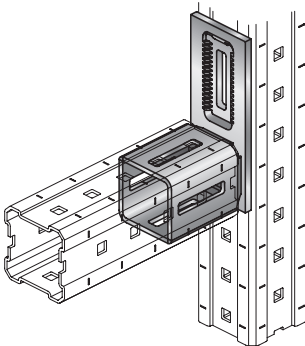
- Provides easy-to-install, adjustable, flexible solution for industrial and heavy commercial applications, eliminating the need for welding
- Modular system for secondary steel structures such as pipe supports, cable tray supports and platforms
- Fast and efficient installation
- Hot-dip galvanized, no need to paint

Technical data

Material composition	DD11 MOD - HN 555, S235JR - EN 10025
Surface finish	Hot-dip galvanized, 75 µm - ASTM A123

Ordering designation	Height	Length	Weight per metre length	Package contents	Sales pack quantity	Item number
MI-90 3m	90 mm	3 m	9430 g	1x Girder MI-90 3M packed	3 m	304798
MI-90 6m	90 mm	6 m	9430 g	1x Girder MI-90 6M packed	6 m	304799
MI-120 3m	120 mm	3 m	12600 g	1x Girder MI-120 3M packed	3 m	304800
MI-120 6m	120 mm	6 m	12600 g	1x Girder MI-120 6M packed	6 m	304801

Connector MIC-U



KEY APPLICATIONS & ADVANTAGES

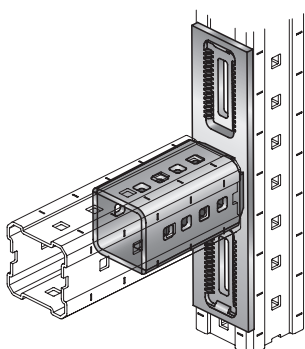
- The safe and modular four-part system for supporting cable trays, pipes in diameters up to 600 mm and miscellaneous secondary steel
- Easy to install without any welding, provides absolutely reliable solutions for industrial (e.g. pharma, chemical, refineries, power plants, etc.) and heavy commercial applications
- Strong and rigid connection
- Can be finely adjusted by up to 5 mm

Technical data

Additional product information	No cantilever possible Always support on both sides.
---------------------------------------	---

Ordering designation	MI girder type	Set	Weight	Wrench size	Tightening torque	Package contents	Sales pack quantity	Item number
MIC-90-U	90	Yes	2.51 kg	19 mm	84 Nm	1x Connector MIC-90-U assy, 1x Easyhand screw MIA-EH-90 assy, 1x Onehand screw MIA-OH M12x95, 2x Prevail torque hex nut, 1x Easyhand screw/plate	4 pc	304803
MIC-120-U	120	Yes	2.79 kg	19 mm	84 Nm	1x Connector MIC-120-U, 1x Easyhand screw MIA-EH-90 assy, 1x Onehand screw MIA-OH M12x127, 1x Easyhand screw/plate, 2x Prevail torque hex nut	4 pc	304804

Connector MIC-L



KEY APPLICATIONS & ADVANTAGES

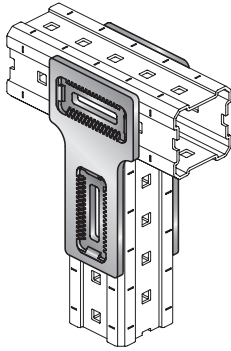
- Modular four-part system for supporting cable trays, pipes and miscellaneous secondary steel
- Provides easy-to-install, adjustable, flexible solutions for industrial and heavy commercial applications, eliminating the need for welding
- Cantilever connections
- Strong and rigid connection
- Can be finely adjusted by up to 5 mm

Technical data

Material composition	Connector: DD11 MOD - HN 547, S235JR - DIN EN 10025; backing plate, toothed plate: EN-GJMW-400-5 - DIN EN 1562, EN-GJMW-450-7 - DIN EN 1562; bolt: 8.8 grade steel; nut: 8 grade steel
Surface finish	HDG: connector 55 µm - DIN EN ISO 1461; backing plate, toothed plate, bolt, nut 45 µm - DIN EN ISO 1461

Ordering designation	MI girder type	Set	Weight	Wrench size	Tightening torque	Package contents	Sales pack quantity	Item number
MIC-90-L	90	Yes	4.05 kg	19 mm	84 Nm	1x Connector MIC-90-L assy, 2x Easyhand screw MIA-EH-90 assy, 2x Onehand screw MIA-OH M12x95, 2x Easyhand screw/plate, 4x Prevail torque hex nut	2 pc	304805

Connector MIC-T



KEY APPLICATIONS & ADVANTAGES

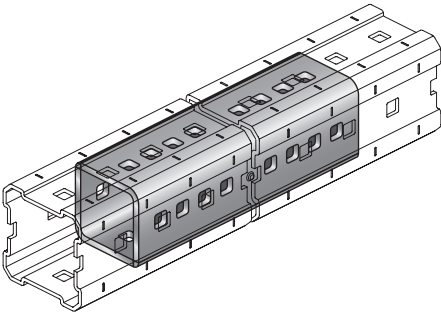
- Supporting cable trays, pipes and miscellaneous secondary steel (MIC-T forms a safe, four-part system)
- Industrial and heavy commercial applications requiring an easy-to-install, adjustable, flexible solution that eliminates the need for welding
- Positive engagement for optimum transmission of forces and moments
- Vibration-resistant screw fastenings thanks to self-locking nuts

Technical data

Material composition	Connector: DD11 MOD - HN 547, S235JR - DIN EN 10025; toothed plate: EN-GJMW-400-5 - DIN EN 1562, EN-GJMW-450-7 - DIN EN 1562; bolt: 8.8 grade steel; nut: 8 grade steel
Surface finish	HDG: connector 55 µm - DIN EN ISO 1461; toothed plate, bolt, nut 45 µm - DIN EN ISO 1461
Additional product information	Use in pairs

Ordering designation	MI girder type	Weight	Wrench size	Tightening torque	Package contents	Sales pack quantity	Item number
MIC-T	90, 120	2.2 kg	19 mm	84 Nm	2x Connector MIC-T, 2x Easyhand screw MIA-EH-90 assy, 2x Toothed plate, 2x Prevail torque hex nut	2 pc	304807

Connector MIC-E



KEY APPLICATIONS & ADVANTAGES

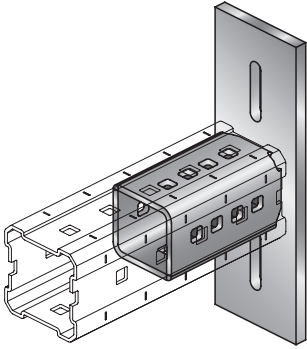
- Connecting MI girders
- Fast and efficient installation
- Positive locking hold for optimum transmission of forces and moments

Technical data

Material composition	Connector: DD11 MOD - HN 547, S235JR - DIN EN 10025; bolt: 8.8 grade steel; nut: 8 grade steel
Surface finish	HDG: connector 55 µm - DIN EN ISO 1461; bolt, nut 45 µm - DIN EN ISO 1461

Ordering designation	MI girder type	Weight	Wrench size	Tightening torque	Package contents	Sales pack quantity	Item number
MIC-90-E	90	3.69 kg	19 mm	84 Nm	1x Connector MIC-90-E, 8x Onehand screw MIA-OH M12x95, 8x Prevail torque hex nut	2 pc	304809

Connector (steel) MIC-S



KEY APPLICATIONS & ADVANTAGES

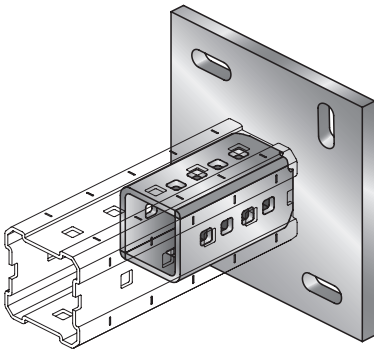
- The safe and modular four-part system for supporting cable trays, pipes and miscellaneous secondary steel
- Provides easy-to-install, adjustable, flexible solutions for industrial and heavy commercial applications
- For fastening to standard steel beams without drilling or welding
- Provides a strong and rigid connection
- Base plates are designed to cover a large range of standard flange widths

Technical data

Additional product information	
	Beam clamps MI-SGC M12

Ordering designation	MI girder type	Steel beam width	Weight	Width - B	X	Y	Tightening torque	Sales pack quantity	Item number
MIC-S90-AA steel	90	75 - 165 mm	4.37 kg	100 mm	100 mm	170 mm	84 Nm	2 pc	304811
MIC-S90-A steel	90	75 - 165 mm	7.14 kg	280 mm	200 mm	140 mm	84 Nm	2 pc	304812
MIC-S90-B steel	90	165 - 235 mm	8.59 kg	350 mm	300 mm	210 mm	84 Nm	2 pc	304813
MIC-S90-C steel	90	235 - 300 mm	10.7 kg	430 mm	350 mm	290 mm	84 Nm	2 pc	304814
MIC-S120-B steel	120	165 - 235 mm	8.99 kg	350 mm	300 mm	210 mm	84 Nm	2 pc	304819

Connector (concrete) MIC-C-AA/-D



KEY APPLICATIONS & ADVANTAGES

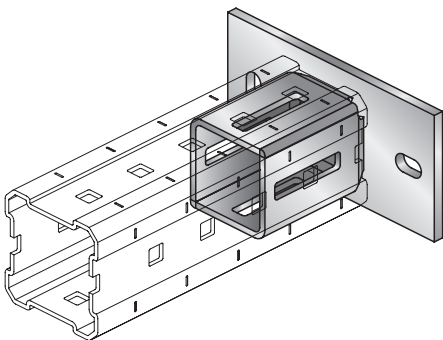
- Modular four-part system for supporting cable trays, pipes and miscellaneous secondary steel
- Provides easy-to-install, adjustable, flexible solutions for industrial and heavy commercial applications, eliminating the need for welding
- Easy installation of MI girders between two walls
- Concrete connector base plates can be fastened using a variety of Hilti anchors
- No welding, no downtime

Technical data

Material composition	
	Connector: DD11 MOD - HN 547, S235JR - DIN EN 10025; bolt: 8.8 grade steel; nut: 8 grade steel
Surface finish	
	HDG: connector 55 µm - DIN EN ISO 1461; bolt, nut 45 µm - DIN EN ISO 1461

Ordering designation	MI girder type	Weight	Wrench size	Tightening torque	Package contents	Sales pack quantity	Item number
MIC-C90-AA concrete	90	3.49 kg	19 mm	84 Nm	1x Connector MIC-C90-AA assy, 2x Onehand screw MIA-OH M12x95, 2x Prevail torque hex nut	2 pc	304825
MIC-C90-D concrete	90	7.84 kg	19 mm	84 Nm	1x Connector MIC-C90-D assy, 2x Onehand screw MIA-OH M12x95, 2x Prevail torque hex nut	2 pc	304827
MIC-C120-D concrete	120	7.96 kg	19 mm	84 Nm	1x Connector MIC-C120-D assy, 1x Onehand screw MIA-OH M12x95, 1x Onehand screw MIA-OH M12x127, 2x Prevail torque hex nut	2 pc	304829

Connector (concrete) MIC-C-U



KEY APPLICATIONS & ADVANTAGES

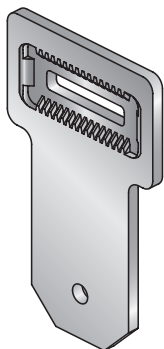
- Installation of MI girders between two walls
- Fastening to concrete walls, floors or ceilings
- Light-duty version for non-cantilever structures with support on both sides
- Oblong holes simplify exact positioning

Technical data

Material composition	
	Connector: DD11 MOD - HN 547, S235JR - DIN EN 10025; bolt: 8.8 grade steel; nut: 8 grade steel
Surface finish	
	HDG: connector 55 µm - DIN EN ISO 1461; bolt, nut 45 µm - DIN EN ISO 1461
Additional product information	
	No cantilever possible, Always support on both sides.

Ordering designation	MI girder type	Weight	Wrench size	Tightening torque	Package contents	Sales pack quantity	Item number
MIC-C90-U concrete	90	2.45 kg	19 mm	84 Nm	1x Connector MIC-C90-U, 1x Onehand screw MIA-OH M12x95, 1x Prevail torque hex nut	2 pc	304826

Connector MIC-U-MA



KEY APPLICATIONS & ADVANTAGES

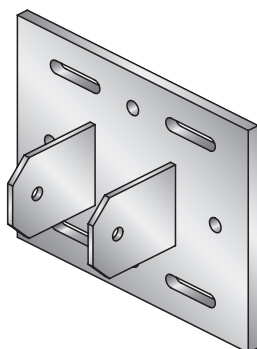
- For supports or corner struts at angles between 0° and 180°
- Vibration-resistant screw fastenings thanks to self-locking nuts
- Can be finely adjusted by up to 5 mm

Technical data

Material composition	Connector: DD11 MOD - HN 547, S235JR - DIN EN 10025; toothed plate: EN-GJMW-400-5 - DIN EN 1562, EN-GJMW-450-7 - DIN EN 1562; bolt: 8.8 grade steel; nut: 8 grade steel
Surface finish	HDG: connector 55 µm - DIN EN ISO 1461; toothed plate, bolt, nut 45 µm - DIN EN ISO 1461
Additional product information	To be used in pairs

Ordering designation	MI girder type	Weight	Wrench size	Tightening torque	Package contents	Sales pack quantity	Item number
MIC-U-MA	90, 120	2.63 kg	19 mm	84 Nm	2x Connector MIC-U-MA, 1x Easyhand screw MIA-EH-90 assy, 1x Hexagon bolt M12X120, 1x Toothed plate, 2x Prevail torque hex nut	2 pc	304806

Connector (multi angle) MIC MA



KEY APPLICATIONS & ADVANTAGES

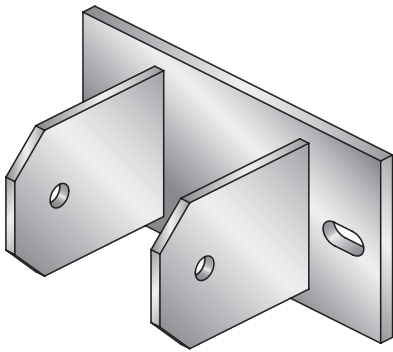
- Modular four-part system for supporting cable trays, pipes and miscellaneous secondary steel
- Provides easy-to-install, adjustable, flexible solutions for industrial and heavy commercial applications, eliminating the need for welding
- Supports / corner struts at angles between 0° and 180°
- Can be mounted directly on standard steel beams
- Uses reliable beam clamps (not included) for connection to steel

Technical data

Material composition	Connector: DD11 MOD - HN 547, S235JR - DIN EN 10025; bolt: 8.8 grade steel; nut: 8 grade steel
Surface finish	HDG: connector 55 µm - DIN EN ISO 1461; bolt, nut 45 µm - DIN EN ISO 1461

Ordering designation	MI girder type	Steel beam width	Weight	Width - B	X	Y	Wrench size	Package contents	Sales pack quantity	Item number
MIC-SB-MA steel	90, 120	165 - 235 mm	7.74 kg	350 mm	300 mm	210 mm	19 mm	1x Connector MIC-SA-MA steel, 1x Hexagon bolt M12X120, 1x Prevail torque hex nut	2 pc	304816

Connector MIC-CU-MA



KEY APPLICATIONS & ADVANTAGES

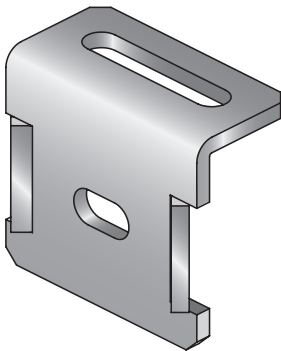
- Connecting girders directly to concrete at angles between 0° and 180°
- Fastening to concrete/walls
- Oblong holes simplify exact positioning

Technical data

Material composition	Connector: DD11 MOD - HN 547, S235JR - DIN EN 10025; bolt: 8.8 grade steel; nut: 8 grade steel
Surface finish	HDG: connector 55 µm - DIN EN ISO 1461; bolt, nut 45 µm - DIN EN ISO 1461

Ordering designation	MI girder type	Weight	Wrench size	Tightening torque	Package contents	Sales pack quantity	Item number
MIC-CU-MA concrete	90, 120	2.21 kg	19 mm	84 Nm	1x Connector MIC-CU-MA Beton, 1x Hexagon bolt M12X120, 1x Prevail torque hex nut	4 pc	304828

U-bolt connector MIC-UB



KEY APPLICATIONS & ADVANTAGES

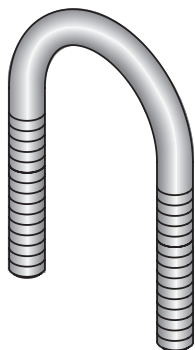
- Reliable fastening with U-bolts (not included)
- Reliable fastening system for use with U-bolts
- Long slots for precise adjustment of pipe position

Technical data

Material composition	Connector, square washer: DD11 MOD - HN 547, S235JR - DIN EN 10025; washer: DIN EN ISO 7089; bolt: 8.8 grade steel; nut: 8 grade steel
Surface finish	HDG: connector, square washer 55 µm - DIN EN ISO 1461; bolt, nut 45 µm - DIN EN ISO 1461

Ordering designation	MI girder type	Weight	Wrench size	Package contents	Sales pack quantity	Item number
MIC-UB90-M12	90	1.27 kg	19 mm	2x Connector U-bolt MIC-UB90-M12, 2x Hexagon bolt M12x115, 2x Prevail torque hex nut, 2x Washer 13x30x3	10 pc	304831
MIC-UB90-M16	90	1.28 kg	19 mm	2x Connector U-bolt MIC-UB90-M16, 2x Hexagon bolt M12x115, 2x Prevail torque hex nut, 2x Washer 13x30x3	6 pc	304834

U-bolt MI-UB



KEY APPLICATIONS & ADVANTAGES

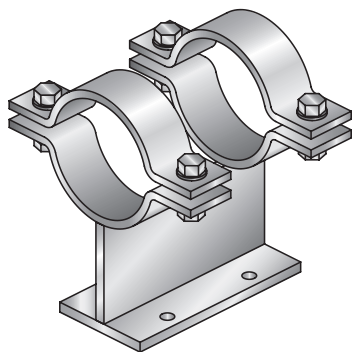
- Provides easy-to-install, adjustable, flexible solutions for industrial and heavy commercial applications, eliminating the need for welding
- Small contact surface between U-bolt and pipe
- Minimizes crevice corrosion

Technical data

Material composition	U-bolt: DD11 MOD - HN 547, S235JR - DIN EN 10025; nut: 8 grade steel; washer: DIN EN ISO 7093- 1-200HV
Surface finish	HDG: 45 µm - DIN EN ISO 1461

Ordering designation	Nominal pipe size	Thread - M	Weight	Thread length - L	Height - H	Width - B	Sales pack quantity	Item number
MI-UB 25-M10	25 mm	M10 oversized	0.17 kg	50 mm	76 mm	48 mm	20 pc	431587
MI-UB 40-M10	40 mm	M10 oversized	0.19 kg	50 mm	92 mm	62 mm	20 pc	431588
MI-UB 50-M12	50 mm	M12 oversized	0.3 kg	50 mm	109 mm	76 mm	20 pc	431589
MI-UB 65-M12	65 mm	M12 oversized	0.32 kg	50 mm	125 mm	94 mm	10 pc	431590
MI-UB 80-M12	80 mm	M12 oversized	0.34 kg	50 mm	138 mm	106 mm	10 pc	431591
MI-UB 100-M16	100 mm	M16 oversized	0.67 kg	60 mm	171 mm	136 mm	10 pc	431592
MI-UB 125-M16	125 mm	M16 oversized	0.69 kg	60 mm	191 mm	164 mm	10 pc	431593
MI-UB 150-M16	150 mm	M16 oversized	0.82 kg	60 mm	217 mm	192 mm	5 pc	431594
MI-UB 200-M16	200 mm	M16 oversized	1.03 kg	70 mm	283 mm	244 mm	5 pc	431595
MI-UB 250-M16	250 mm	M16 oversized	1.37 kg	70 mm	334 mm	298 mm	5 pc	431598

Pipe shoe MI-PS 2/1



KEY APPLICATIONS & ADVANTAGES

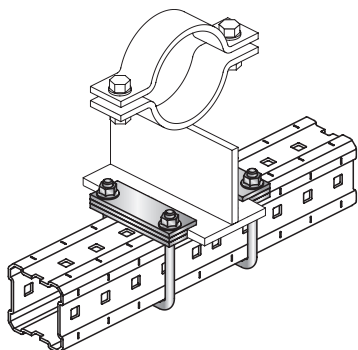
- Provides an easy-to-install, reliable solution for applications in the chemical, pharmaceutical and petrochemical industries or in incineration plants and power stations
- Fastening pipes, with strap for fixed point, with connector for guide support
- For pipe diameters from DN 25 to DN 300
- With mounting holes for installing light-duty fixed points
- Additional diameters available on request

Technical data

Material composition	Connector: S235JRG-2 - DIN EN 10025; bolt: 8.8 grade steel; nut: 8 grade steel
Surface finish	HDG: connector 70 µm - DIN EN ISO 1461; bolt, nut 45 µm - DIN EN ISO 1461

Ordering designation	Nominal pipe size	Diameter - D	Weight	Height - H	Width - B	X	Cross section width and thickness (b x s)	Sales pack quantity	Item number
MI-PS2/1 100-85	100 mm	114.3 mm	5.3 kg	85 mm	80 mm	9 mm	40 x 8 mm	1 pc	304857

Pipe shoe connector MIC-PS/MIC-PSP



KEY APPLICATIONS & ADVANTAGES

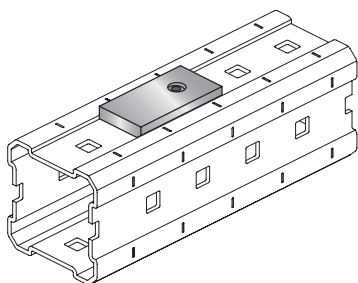
- Provides easy-to-install, adjustable, flexible solutions for industrial and heavy commercial applications, eliminating the need for welding
- Pipe shoe for hot pipes
- Adapter components for pipe support clamping systems
- Pipe shoe support free to move in one direction
- Fully adjustable

Technical data

Material composition	U-bolt, plate: DD11 MOD - HN 547, S235JR - DIN EN 10025; nut: 8 grade steel
Surface finish	HDG: U-bolt, nut 45 µm - DIN EN ISO 1461; plate: 55 µm - DIN EN ISO 1461

Ordering designation	MI girder type	Weight	Wrench size	Tightening torque	Package contents	Sales pack quantity	Item number
MIC-PS90	90	1.92 kg	19 mm	60 Nm	2x Bow MIA-BO90-M12, 4x Prevail torque hex nut	4 pc	304838
MIC-PS120	120	2 kg	19 mm	60 Nm	2x Bow MIA-BO120-M12, 4x Prevail torque hex nut	4 pc	304839

Pipe shoe connector MIC-PG



KEY APPLICATIONS & ADVANTAGES

- Friction-reducing element for use at sliding supports
- For use with all types of Hilti pipe shoes and Hilti U-bolts

Technical data

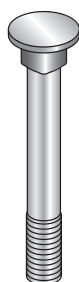
Temperature resistance	-200 - 90 °C
-------------------------------	--------------

Ordering designation	MI girder type	Coefficient of sliding friction	Weight	Package contents	Sales pack quantity	Item number
MIC-PG	90, 120	0.15	0.02 kg	1x Connector pipe shoe Gleitelement, 1x Light-duty anchor HLD 2	10 pc	304842

One-hand

screw

MIA-OH



KEY APPLICATIONS & ADVANTAGES

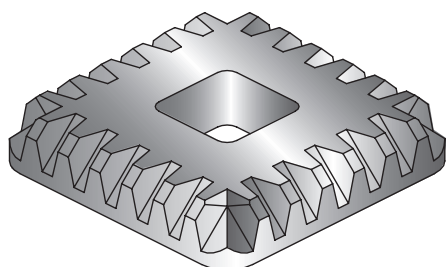
- Parts designed for easy assembly (shaped to prevent rotation)

Technical data

Material composition	Steel grade 8.8
Surface finish	HDG: 45 µm - DIN EN ISO 1461

Ordering designation	MI girder type	Length - L	Weight	Tightening torque	Package contents	Sales pack quantity	Item number
MIA-OH90	90	95 mm	0.1 kg	84 Nm	1x Onehand screw MIA-OH M12x95	10 pc	304889

Toothed plate MIA-TP



KEY APPLICATIONS & ADVANTAGES

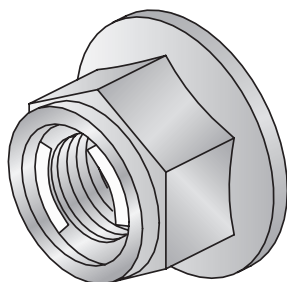
- "Easy hand" toothed plate for easy single-handed adjustment of the connection

Technical data

Material composition	EN-GJMW-400-5 - DIN EN 1562, EN-GJMW-450-7 - DIN EN 1562
Surface finish	HDG: 45 µm - DIN EN ISO 1461

Ordering designation	MI girder type	Weight	Package contents	Sales pack quantity	Item number
MIA-TP	90, 120	0.06 kg	1x Toothed plate	20 pc	305707

Prevailing torque hex nut M12-F-SL-WS 3/4"



KEY APPLICATIONS & ADVANTAGES

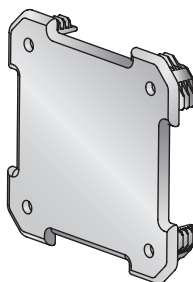
- Self-locking function through the thread insert

Technical data

Material composition	Steel grade 8
Surface finish	HDG: 45 µm - DIN EN ISO 1461

Ordering designation	Weight	Tightening torque	Package contents	Sales pack quantity	Item number
M12-F-SL-WS 3/4"	0.02 kg	84 Nm	1x Prevail torque hex nut	100 pc	382897

Girder end cap MIA-EC



KEY APPLICATIONS & ADVANTAGES

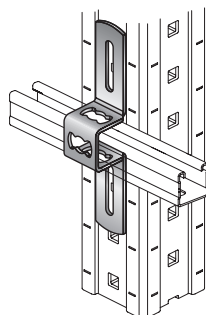
- For closing the ends of girders
- With built-in opening to permit drainage of liquids

Technical data

Temperature resistance	-30 - 90 °C
-------------------------------	-------------

Ordering designation	MI girder type	Weight	Sales pack quantity	Item number
MIA-EC90	90	0.02 kg	25 pc	432077
MIA-EC120	120	0.03 kg	25 pc	432078

MI/MQ cross connector MIC-MI/MQ-X



KEY APPLICATIONS & ADVANTAGES

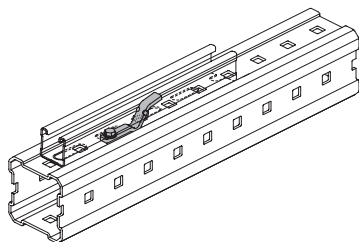
- Direct connection of MQ installation channels to the MI system
- Keyed hold for optimum transmission of forces and moments
- Forces and moments are transmitted reliably through positive engagement

Technical data

Material composition	Connector: DD11 MOD - HN 547, S235JR - DIN EN 10025; bolt: 8.8 grade steel; nut: 8 grade steel
Surface finish	HDG: connector 55 µm - DIN EN ISO 1461; bolt, nut 40 µm - DIN EN ISO 10684

Ordering designation	MI girder type	Weight	Tightening torque	Package contents	Sales pack quantity	Item number
MIC-MI/MQ-X	90, 120	0.36 kg	50 Nm	1x Connector MIC-MI/MQ-X, 2x Hexagon nut M10 hot dip galv, 2x Hexagon bolt M10X100, 4x Washer 10 hot dip galv	16 pc	304881

Connector MIC-MI/MQ M8



KEY APPLICATIONS & ADVANTAGES

- Direct connection of MQ installation channels to the MI system
- Forces and moments are transmitted reliably through positive engagement
- Keyed hold for optimum transmission of forces and moments

Technical data

Material composition	Connector: DD11 MOD - HN 547, S235JR - DIN EN 10025; bolt: 8.8 grade steel
Surface finish	HDG: connector 55 µm - DIN EN ISO 1461; bolt 45 µm - DIN EN ISO 1461

Ordering designation	MI girder type	Weight	Tightening torque	Package contents	Sales pack quantity	Item number
MIC-MI/MQ-M8	90, 120	0.06 kg	20 Nm	1x Connector MIC-MI/MQ-M8, 1x Hexagon bolt with flange M8x16	5 pc	304882